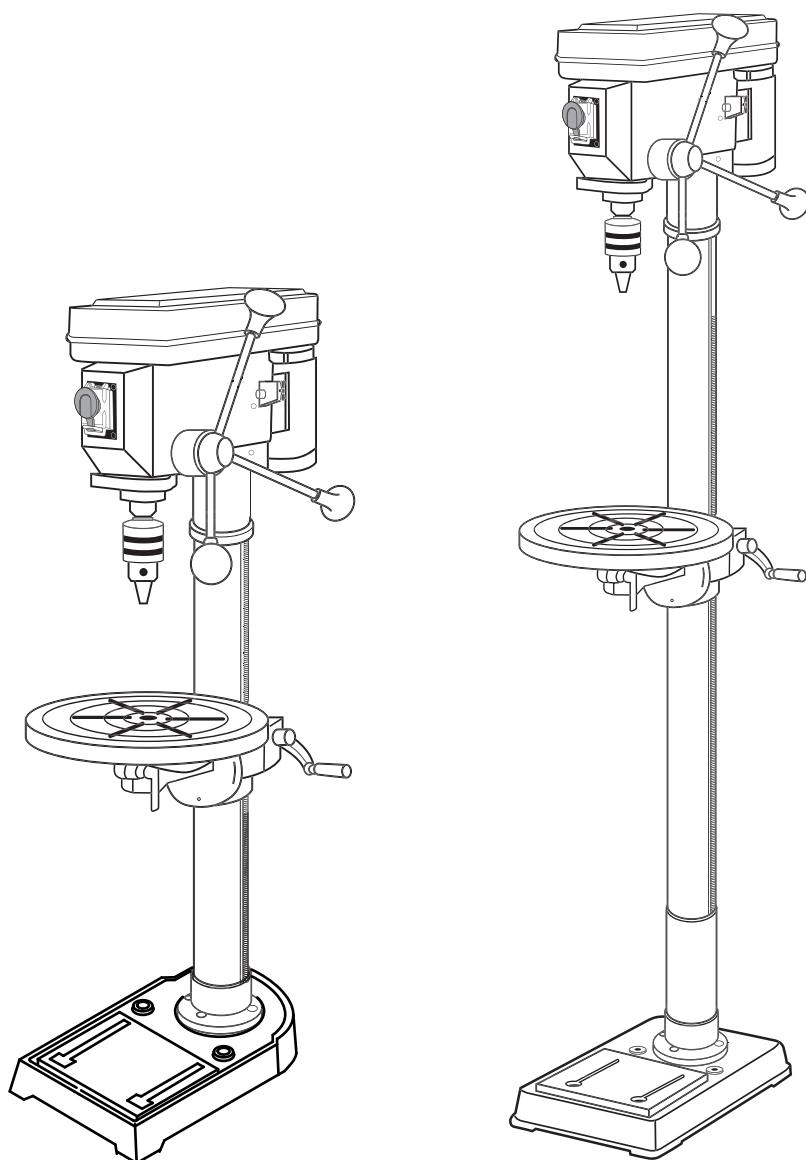


MAGNUM

INDUSTRIAL

MODEL NO.: MI-76100 MI-7**6**150



OPERATING MANUAL

RULES for SAFE OPERATION

MAGNUM INDUSTRIAL MI-76100 and MI 76150 DRILL PRESSES

To help ensure safe operation, please take a moment to learn the how to operate the machine and understand its applications and limitations, as well as potential hazards. KMS Tools and Equipment disclaims any real or implied warranty and holds itself harmless for any injury that may result from the improper use of its equipment.

- Do not operate the drill press when tired, distracted or under the effects of drugs, alcohol or any medication that impairs reflexes or alertness.
- Ensure your working area is well lit and free of debris.
- Keep children and visitors at a safe distance when the drill press is operating. Do not permit them to operate the drill press.
- Prevent unauthorized or unsupervised use by child proofing and tamper proofing your shop and all machinery with locks, master electrical switches and switch keys.
- Stay alert! Give your work your undivided attention. Even a momentary distraction can lead to serious injury.
- Fine particulate dust is a carcinogen that can be hazardous to health. Work in a well-ventilated area and whenever possible use a dust collector. Wear face, eye, ear, respiratory and body protection devices.
- Do not wear loose clothing, gloves, bracelets, necklaces or other jewelry while the drill press is in operation.
- Remove adjusting wrenches, tools and other clutter from the machine and the table surface before using the machine.
- Keep hands well away from the bit, chuck and all moving parts. Use a brush, not hands, to clear away chips and dust.
- Always use a clean, sharp drill bit. Dirty or dull bits are unsafe and can lead to accidents.
- Ensure that the key and adjusting wrenches have been removed before turning power on.
- Use suitable workpiece support if the workpiece does not have a flat surface.
- Hold material firmly against the table.
- Do not work on long stock without adequate support on the either side of the table.
- Do not force the drill press. The drill press will perform better and more safely when working at the rate for which it was designed.
- Avoid working from awkward or off balance positions. Do not overreach and keep both feet on floor.
- Keep guards in place and in working order. If a guard must be removed for maintenance or cleaning, properly re-attach it before using the tool again.
- Never leave the machine unattended while it is running or with the power on.
- Never stand on machinery. Serious injury could result if the tool is tipped over or if the cutting tool is unintentionally contacted.
- Always disconnect the machine from the power source before servicing or changing accessories such as blades, or before performing any maintenance or cleaning, or if the machine will be left unattended.
- Ensure the switch is in the OFF position before plugging in the power cord.
- Make sure the tool is properly grounded. If equipped with a three-prong plug it should be used with a three-pole receptacle. Never remove the third prong.
- Do not use this drill press for other than its intended use. If used for other purposes, KMS Tools and Equipment disclaims any real or implied warranty and holds itself harmless for any injury that may result from that use.

ASSEMBLY INSTRUCTIONS

MAGNUM INDUSTRIAL MI-76100 & MI-76150 DRILL PRESSES

- Before you assemble your drill press, review the parts breakdown and keep it ready for reference.
- Start by removing the parts from the packaging.
- Carefully check the packaging for small pieces before you continue.
- Lay out the parts on a large, clear and unobstructed area and ensure that all parts are accounted for.
- If you have any questions or require further information, please contact the KMS Tools Service Department at 604.395.4134 or email repairs@kmstools.com

ASSEMBLING THE DRILL PRESS

1. Bolt the **BASE FLANGE (4)** and **COLUMN (19)** to the **BASE (1)**.
2. Carefully remove the **RACK COLLAR (21)** from the **COLUMN (19)**. Apply even pressure and gently slide the **COLLAR**. Using too much force can cause the **COLLAR** to bind. If it is tight, try gently tapping the **COLLAR**.
3. Ensure that the **WORM GEAR (10)** and **HELICAL GEAR (9)** are installed in the **TABLE BRACKET (7)** and have not fallen out during unpacking.
4. Place the **RACK (18)** into the **TABLE BRACKET (7)**. The tapered end of the **RACK** faces upward and the square end faces downward.
5. Lower the **RACK (18)** and the **TABLE BRACKET (7)** onto the **COLUMN (19)**. Take care to hold the two pieces together. This may require two people.
6. Fit the bottom lip of the **RACK (18)** in the friction ring on the **BASE FLANGE (4)**. Secure the top of the rack by installing the **RACK COLLAR (21)**. Tighten the **SET SCREW (20)** in the **RACK COLLAR (21)**. Take care not to over tighten.
7. Slide the **CRANK SLEEVE HANDLE (6)** on the **WORM GEAR (10)** and secure it with the **SET SCREW (5)**.
8. Lower the **HEAD (26)** to the **COLUMN (19)** and secure the **HEAD (26)** by tightening two **SET SCREWS (26-1)**. This may require two people.
9. Secure the **TABLE (17)** onto the **TABLE ARM (12)**.
10. Attach a **HANDLE KNOB (23)** to each of the three **FEED HANDLES (22)**. Then secure the **HANDLES (22)** to the **PINION SHAFT (24)**.
11. Thread a light bulb (maximum 40 watts) into the **LAMP HOLDER (32)**. (Light bulb sold separately.)
12. Remove the protective coating from all surfaces using a rag dipped in environmentally safe degreaser

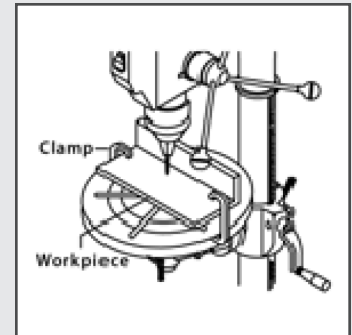
INSTALLING THE CHUCK

1. Degrease all pieces. Slide the **ARBOR (53)** into the **SPINDLE (51)**, flat end up.
2. Slide the **CHUCK (54)** over the tapered end of the **ARBOR (53)** and, using a wooden mallet, give the **CHUCK** a good tap. The taper is designed to hold the **CHUCK** securely in place.

OPERATING INSTRUCTIONS FOR MI-76100 and MI 76150 DRILL PRESSES

DRILLING

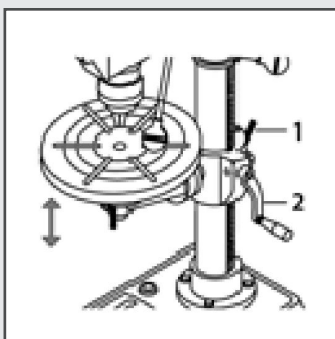
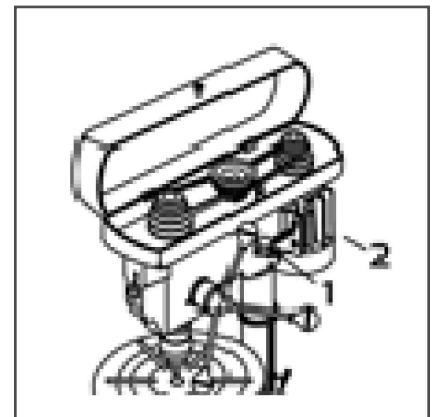
- Always secure workpiece with hold-downs or clamps.
- Never hold the workpiece only by hand.
- Use clean, sharp bits. Using a damaged or broken bit could result in serious injury.
- When drilling a flat workpiece, place it on a wooden base and clamp it to the table.
- Use machine spur bits for drilling wood. Do not use hand bits with screw tips. At drill press speeds, these bits rotate into the workpiece so rapidly that they can spin and lift the workpiece off the table.



CHANGING SPEEDS

Make sure the drill press has come to a complete stop before changing speeds. Refer to the spindle speed selection chart located on the inside of the spindle cover.

1. Disconnect the drill press from the power source.
2. Loosen the slide bar bolt (1) located on the right side of the head.
3. Pull the motor (2) in towards the head to loosen the belts.
4. Relocate belts to the desired pulleys to select a new spindle speed.
5. Push the **MOTOR (2)** back, away from the head.
6. Retighten the **SLIDE BAR BOLT (1)** and check the belt tension.



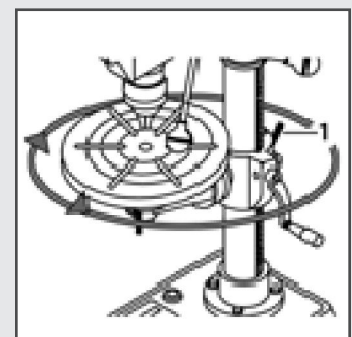
ADJUSTING THE TABLE HEIGHT

1. Loosen the **COLUMN LOCK HANDLE (1)**.
2. Turn the **CRANK HANDLE (2)** until the table is at the desired height.
3. Retighten the **COLUMN LOCK HANDLE (1)** to secure the table in position.

TABLE SWING ADJUSTMENT

1. Loosen **COLUMN LOCK HANDLE (1)**.
2. Swing the table arm bracket and the table to the desired position.
3. Retighten **COLUMN LOCK HANDLE (1)**.

When working with taller work pieces, swing the table out of the way and use the drill press base as a table.



OPERATING INSTRUCTIONS FOR MI-76100 and MI 76150 DRILL PRESSES

TABLE ROTATION ADJUSTMENT

1. Loosen the **TABLE LOCK HANDLE (3)**.
2. Rotate the table to the desired position.
3. Retighten the **TABLE LOCK HANDLE (3)**.

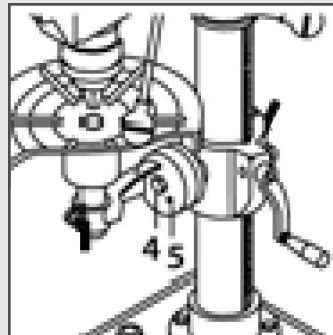
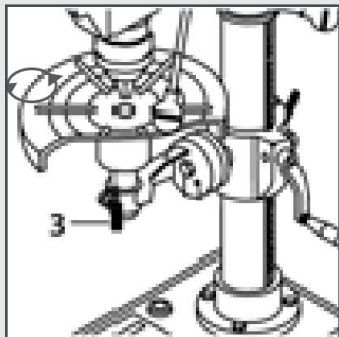
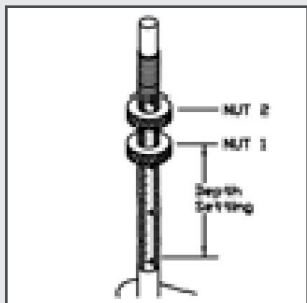


TABLE TILT ADJUSTMENT

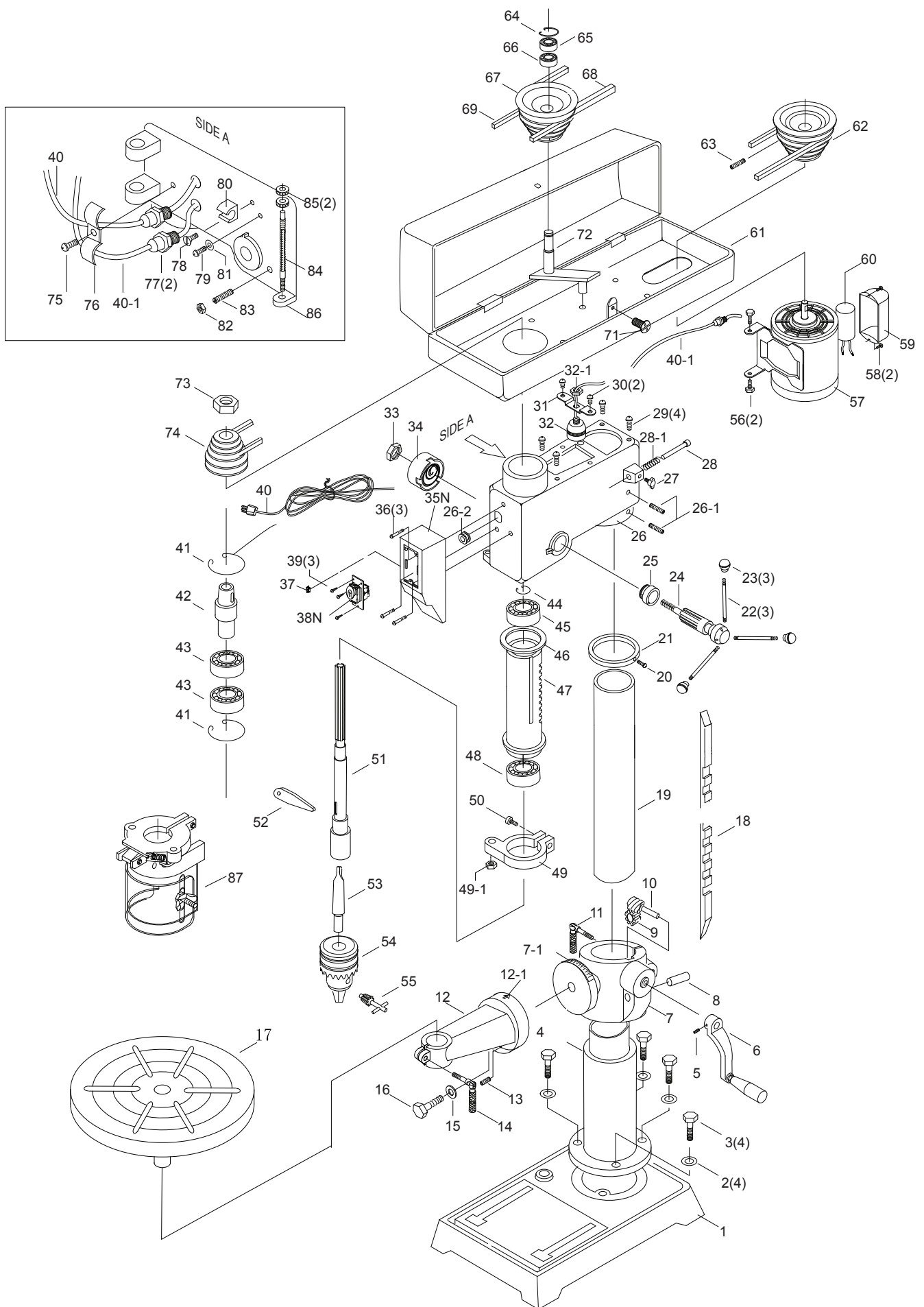
1. Loosen the **PIVOT BOLT (4)** and **SET SCREW (5)**.
2. Tilt the table to the desired angle.
3. Retighten the **PIVOT BOLT (4)** and **SET SCREW (5)**.



DEPTH STOP ADJUSTMENT

1. Set the bottom edge of **NUT (1)** even with the desired depth setting.
2. Tighten **NUT (2)** against **NUT (1)** to secure it in position.
3. Depth stop is now set.

NOTES



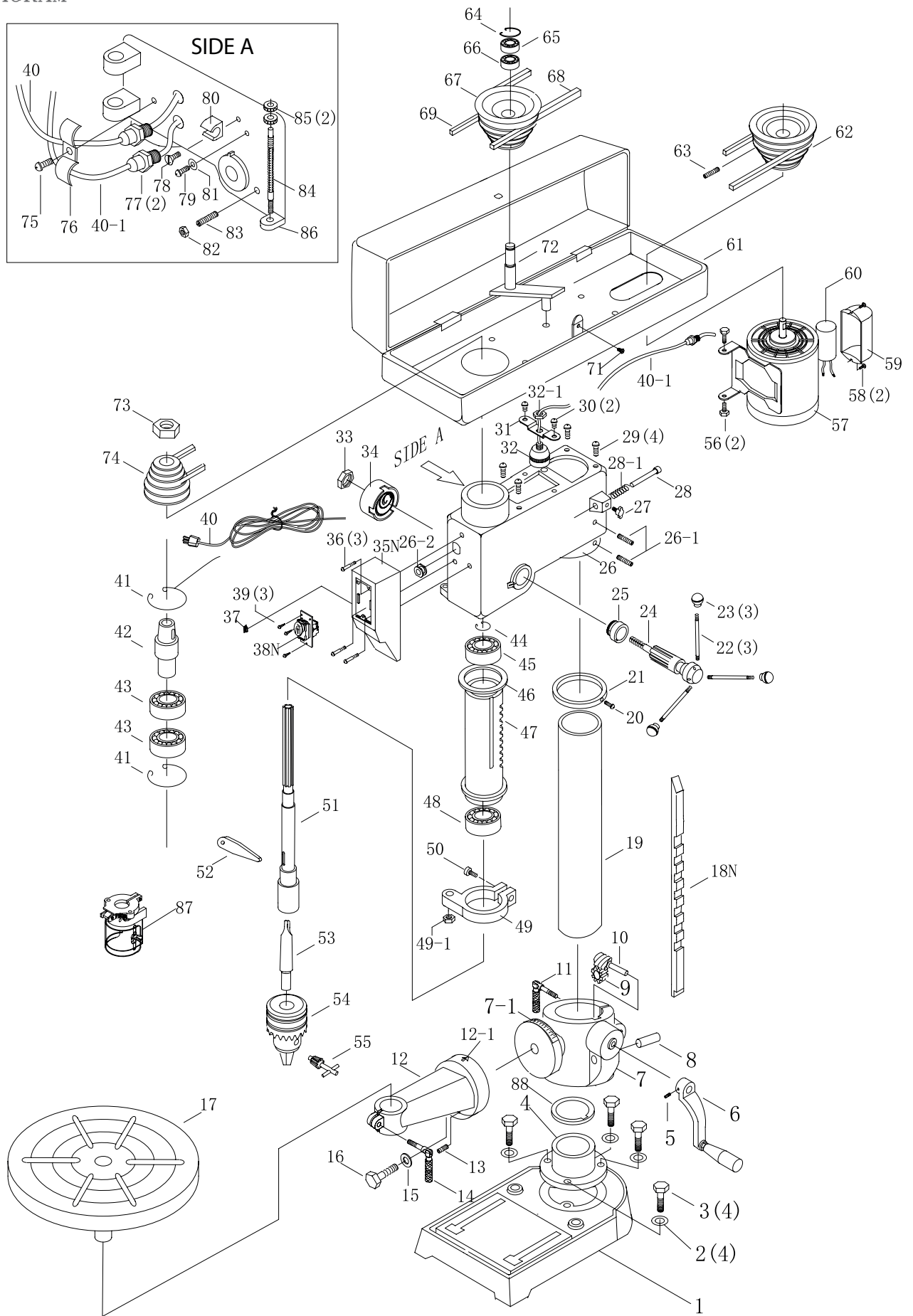
PART LIST FOR MI-76150

PART NO.	DESCRIPTION	QTY
MI-76150-01	BASE	1
MI-76150-02	WASHER	4
MI-76150-03	BOLT	4
MI-76150-04	BASE FLANGE, FLOOR	1
MI-76150-05	SCREW	1
MI-76150-06	CRANK SLEEVE HANDLE	1
MI-76150-07	TABLE BRACKET	1
MI-76150-07-1	TILT SCALE	1
MI-76150-08	GEAR SHAFT	1
MI-76150-09	HELICAL GEAR	1
MI-76150-10	ELEVATING WORM	1
MI-76150-11	CLAMP BOLT	1
MI-76150-12	TABLE ARM BRACKET	1
MI-76150-12-1	POINTER	1
MI-76150-13	SET SCREW	1
MI-76150-14	CLAMP BOLT	1
MI-76150-15	WASHER	1
MI-76150-16	BOLT	1
MI-76150-17	TABLE	1
MI-76150-18	RACK	1
MI-76150-19	COLUMN	1
MI-76150-20	SCREW	1
MI-76150-21	RACK COLLAR	1
MI-76150-22	FEED HANDLE	3
MI-76150-23	HANDLE KNOB	3
MI-76150-24	PINION SHAFT	1
MI-76150-25	SLEEVE	1
MI-76150-26	HEAD	1
MI-76150-26-1	SET SCREW	2
MI-76150-26-2	RUBBER BUSHING	1
MI-76150-27	SET SCREW	1
MI-76150-28	BELT TENSION ADJ. ROD	1
MI-76150-28-1	SPRING	1
MI-76150-29	SCREW	4
MI-76150-30	SCREW	2
MI-76150-31	LAMP FRAME	1
MI-76150-32	LAMP HOLDER	1
MI-76150-32-1	NUT	1
MI-76150-33	NUT	1
MI-76150-34	SPRING & CAP	1
MI-76150-35	SWITCH BOX	1
MI-76150-35N	SWITCH BOX	1
MI-76150-35-1	WASHER PAD(OLD)	1
MI-76150-35-2	SWITCH PLATE(OLD)	1
MI-76150-36	SCREW	3
MI-76150-37	LIGHT SWITCH	1
MI-76150-38N	NEW RELAY SWITCH	1
MI-76150-39	SCREW	1
MI-76150-40	ELECTRICAL CORD	1

PART LIST FOR MI-76150

PART NO.	DESCRIPTION	QTY
MI-76150-40-1	MOTOR CORD	1
MI-76150-41	SNAP RING	1
MI-76150-42	DRIVER INSERT	1
MI-76150-43	BEARING	1
MI-76150-44	SNAP RING	1
MI-76150-45	BEARING	1
MI-76150-46	QUILL GASKET	1
MI-76150-47	QUILL	1
MI-76150-48	BEARING	1
MI-76150-49	SUPPORT/CLAMP SEAT DEPTH STOP	1
MI-76150-49-1	NUT	1
MI-76150-50	SCREW	1
MI-76150-51	SPINDLE	1
MI-76150-52	DRIFT KEY	1
MI-76150-53	ARBOR	1
MI-76150-54	CHUCK	1
MI-76150-55	KEY	1
MI-76150-56	BOLT	2
MI-76150-57	MOTOR	1
MI-76150-58	SCREW	2
MI-76150-59	CAPACITOR COVER	1
MI-76150-60	CAPACITOR	1
MI-76150-61	PULLEY GUARD	1
MI-76150-62	MOTOR PULLEY	1
MI-76150-63	SET SCREW	1
MI-76150-64	SNAP RING	1
MI-76150-65	SNAP RING	1
MI-76150-66	BEARING	1
MI-76150-67	MIDDLE PULLEY	1
MI-76150-68	V-BELT	1
MI-76150-69	V-BELT	1
MI-76150-70	KNOB	1
MI-76150-71	SCREW	1
MI-76150-72	SHAFT ASSEMBLY	1
MI-76150-73	NUT	1
MI-76150-74	SPINDLE PULLEY	1
MI-76150-75	SCREW	1
MI-76150-76	CORD CLAMP	1
MI-76150-77	ELEVTRICAL CORD/LAMP	1
MI-76150-78	SCREW	1
MI-76150-79	SCREW	1
MI-76150-80	KEY HOLDER	1
MI-76150-81	WASHER	1
MI-76150-82	NUT	1
MI-76150-83	SET SCREW	1
MI-76150-84	DEPTH STOP ROD	1
MI-76150-85	NUT	2
MI-76150-86	DEPTH STOP SUPPORT	1
MI-76150-87	GUARD	1

DIAGRAM



PART LIST FOR MI-76100

PART NO.	DESCRIPTION	QTY
MI-76100-01	BASE	1
MI-76100-02	WASHER	4
MI-76100-03	BOLT	4
MI-76100-04	BASE FLANGE, BENCH	1
MI-76100-05	SCREW	1
MI-76100-06	CRANK SLEEVE HANDLE	1
MI-76100-07	TABLE BRACKET	1
MI-76100-07-1	TILT SCALE	1
MI-76100-08	GEAR SHAFT	1
MI-76100-09	HELICAL GEAR	1
MI-76100-10	ELEVATING WORM	1
MI-76100-11	CLAMP BOLT	1
MI-76100-12	TABLE ARM BRACKET	1
MI-76100-12-1	POINTER	1
MI-76100-13	SET SCREW	1
MI-76100-14	CLAMP BOLT	1
MI-76100-15	WASHER	1
MI-76100-16	BOLT	1
MI-76100-17	TABLE	1
MI-76100-18	RACK	1
MI-76100-19	COLUMN	1
MI-76100-20	SCREW	1
MI-76100-21	RACK COLLAR	1
MI-76100-22	FEED HANDLE	3
MI-76100-23	HANDLE KNOB	3
MI-76100-24	PINION SHAFT	1
MI-76100-25	SLEEVE	1
MI-76100-26	HEAD	1
MI-76100-26-1	SET SCREW	2
MI-76100-26-2	RUBBER BUSHING	1
MI-76100-27	SET SCREW	1
MI-76100-28	BELT TENSION ADJ. ROD	1
MI-76100-28-1	SPRING	1
MI-76100-29	SCREW	4
MI-76100-30	SCREW	2
MI-76100-31	LAMP FRAME	1
MI-76100-32	LAMP HOLDER	1
MI-76100-32-1	NUT	1
MI-76100-33	NUT	1
MI-76100-34	SPRING & CAP	1
MI-76100-35	SWITCH BOX	1
MI-76100-35N	SWITCH BOX	1
MI-76100-35-1	WASHER PAD(OLD)	1
MI-76100-35-2	SWITCH PLATE(OLD)	1
MI-76100-36	SCREW	3
MI-76100-37	LIGHT SWITCH	1
MI-76100-38N	NEW RELAY SWITCH	1
MI-76100-39	SCREW	1
MI-76100-40	ELECTRICAL CORD	1
MI-76100-40-1	MOTOR CORD	1

PART LIST FOR MI-76100

PART NO.	DESCRIPTION	QTY
MI-76100-41	SNAP RING	1
MI-76100-42	DRIVER INSERT	1
MI-76100-43	BEARING	1
MI-76100-44	SNAP RING	1
MI-76100-45	BEARING	1
MI-76100-46	QUILL GASKET	1
MI-76100-47	QUILL	1
MI-76100-48	BEARING	1
MI-76100-49	SUPPORT/CLAMP SEAT DEPTH STOP	1
MI-76100-49-1	NUT	1
MI-76100-50	SCREW	1
MI-76100-51	SPINDLE	1
MI-76100-52	DRIFT KEY	1
MI-76100-53	ARBOR	1
MI-76100-54	CHUCK	1
MI-76100-55	KEY	1
MI-76100-56	BOLT	2
MI-76100-57	MOTOR	1
MI-76100-58	SCREW	2
MI-76100-59	CAPACITOR COVER	1
MI-76100-60	CAPACITOR	1
MI-76100-61	PULLEY GUARD	1
MI-76100-62	MOTOR PULLEY	1
MI-76100-63	SET SCREW	1
MI-76100-64	SNAP RING	1
MI-76100-65	SNAP RING	1
MI-76100-66	BEARING	1
MI-76100-67	MIDDLE PULLEY	1
MI-76100-68	V-BELT	1
MI-76100-69	V-BELT	1
MI-76100-70	KNOB	1
MI-76100-71	SCREW	1
MI-76100-72	SHAFT ASSEMBLY	1
MI-76100-73	NUT	1
MI-76100-74	SPINDLE PULLEY	1
MI-76100-75	SCREW	1
MI-76100-76	CORD CLAMP	1
MI-76100-77	ELEVTRICAL CORD/LAMP	1
MI-76100-78	SCREW	1
MI-76100-79	SCREW	1
MI-76100-80	KEY HOLDER	1
MI-76100-81	WASHER	1
MI-76100-82	NUT	1
MI-76100-83	SET SCREW	1
MI-76100-84	DEPTH STOP ROD	1
MI-76100-85	NUT	2
MI-76100-86	DEPTH STOP SUPPORT	1
MI-76100-87	NUT	1