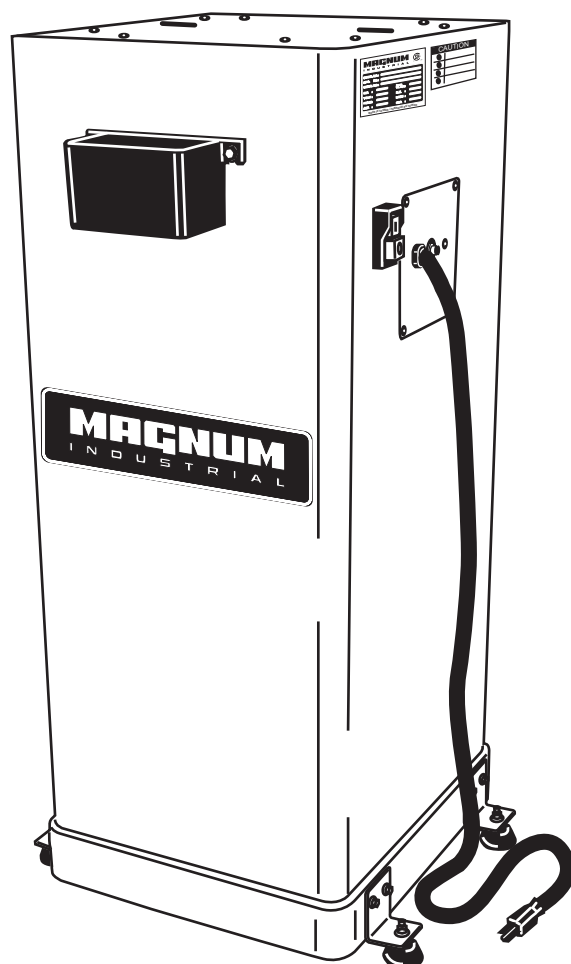


MAGNUM

I N D U S T R I A L

MODEL NO.: MI-12910



OPERATING MANUAL

CONTENTS:

IMPORTANT SAFETY RULES-----	2
IMPORTANT SAFETY RULES FOR DUST COLLECTORS-----	3
GROUNDING INSTRUCTIONS-----	4
SPECIFICATIONS-----	5
UNPACKING CONTENTS-----	6
HARDWARE PACKAGE-----	7
ASSEMBLY INSTRUCTION-----	8
EXPLODED DIAGRAM-----	10
PARTS LIST-----	11

- **WARNING!**

Please read this manual carefully before assembly, testing and operating.

- **WARNING!**

Do not operate this unit until hose or pipe is installed onto the dust inlet port.

IMPORTANT SAFETY RULES

Wood working can be dangerous if safe and proper operating procedures are not followed. As with all machinery, there are certain hazards involved with the operation of the product. Using the machine with respect and caution will considerably lessen the possibility of personal injury. However, if normal safety precautions are overlooked or ignored, personal injury to the operator may result.

Safety equipment such as guards, push sticks, hold-downs, feather boards, goggles, dust masks and hearing protection can reduce your potential for injury. But even the best guard won't make up for poor judgment, carelessness or inattention. Always use common sense and exercise caution in the workshop. If a procedure feels dangerous, don't try it. Figure out an alternative procedure that feels safer. REMEMBER: Your personal safety is your responsibility.

Operations

Press the green button to start machine and press the red button to start machine.

User-maintenance

WARNING: Always disconnect power to the machine before performing maintenance. Failure to do this may result in serious personal injury.

Keep dust collection stand clean. Brush away chips and debris after use.

Periodically empty collection drawer and clean out interior of dust collector stand.

Replace filter after maximum 800 hours of use.

Inspect power cord; have damaged or worn cord replaced before operating dust collector.

Any other servicing should be performed by an authorized service representative.

IMPORTANT SAFETY RULES FOR DUST COLLECTORS

WARNING: Basic precautions should always be followed when using your dust collector. To reduce the risk of injury, electrical shock or fire, comply with the safety rules listed below:

1. READ and understand the instruction manual before operating the dust collector.
2. DO NOT leave the dust collector plugged into the electrical outlet. Unplug dust collector from outlet when not in use and before servicing, changing bags, unclogging and cleaning.
3. ALWAYS turn the power switch "OFF" before unplugging the dust collector.
4. **WARNING: TO REDUCE THE RISK OF ELECTRICAL SHOCK** do not use outdoors or on wet surfaces. Use for dry pickup only!
5. FOLLOW all electrical and safety codes, including the National Electric Code (NEC) and the Occupational Safety and Health Regulations (OSHA). All electrical connections and wiring should be made by qualified personnel only.
6. DO NOT use the dust collector to pick up flammable or combustible liquids, such as gasoline. NEVER use the dust collector near any flammable or combustible liquids.
7. USE the dust collector to pick up wood materials only. DO NOT use the dust collector to pick up metal shavings, dust, water, or parts.
8. NEVER use the dust collector to dissipate fumes or smoke. NEVER pick-up anything that is burning or smoking, such as cigarettes, matches or hot ashes.
9. USE only as described in this manual.
10. DO NOT pull the dust collector by the power cord. NEVER allow the power cord to come in contact with sharp edges, hot surfaces, oil or grease.
11. DO NOT unplug the dust collector by pulling on the power cord. ALWAYS grasp the plug, not the cord.
12. DO NOT handle the plug or dust collector with wet hands.
13. REPLACE a damaged cord immediately. DO NOT use a damaged cord or plug. If the dust collector is not operating properly, or has been damaged, left outdoors or has been in contact with water, return it to an Authorized Service Center for service.
14. DO NOT use the dust collector as a toy. DO NOT use near or around children.
15. DO NOT insert fingers or foreign objects into the dust intake ports. Keep hair, loose clothing, fingers, and all body parts away from openings and moving parts of the dust collector.
16. DO NOT use the dust collector without a filter bag and dust collection bag in place and properly secured.
17. DO NOT operate the dust collector with unused dust intake ports uncapped. ALWAYS cover exposed dust intake ports.
18. PERIODICALLY INSPECT dust and filter bags for any cuts, rips or tears. NEVER operate the dust collector with a damaged bag or vacuum hose.
19. The dust collector is designed for home use or light commercial duty ONLY!
20. CONNECT dust collector to a properly grounded outlet only. See Grounding Instructions.

SAVE THESE INSTRUCTIONS

GROUNDING INSTRUCTIONS

The appliance must be grounded, if it should malfunction or breakdown, grounding provides a path of least resistance for electric current to reduce the risk of electric shock. This appliance is equipped with a cord having equipment-ground conductor and grounding plug. The plug must be inserted into an appropriate outlet that is properly installed and grounded in accordance with all local codes and ordinances.

WARNING – Improper connection of the equipment-grounding conductor can result in a risk of electric shock. Check with a qualified electrician or service person if you are in doubt as to whether the outlet is properly grounded. Do not modify the plug provided with the appliance – if it will not fit the outlet; have a proper outlet installed by a qualified electrician.

For grounded, cord-connected appliances:

This appliance is for use on a circuit having a normal rating more than 120 volt and is factory-equipped with a specific electric cord and plug to permit connection to a proper electric circuit. Make sure that the appliance is connected to an outlet having the same configuration as the plug. No adaptor should be used with this appliance. If the appliance must be reconnected for use on a different type of electric circuit, qualified service personnel should make the reconnection.

MOUNTING YOUR TOOL : this stand will service a variety of tools that produce metal or wood dust .
If the mounting holes provided do not match your tool pattern it will require that you drill and bolt the machine securely.

Specifications:

Motor----- 1/2HP

AMP----- 2.8A

Motor Speed----- 3450RPM

Suction Capacity----- 472CFM

Static Pressure----- 2.44 inH₂O

Impeller Size----- 6.7"

Inlet Size----- 5"x3"(1)x2"(1)

Switch----- Magnetic Switch

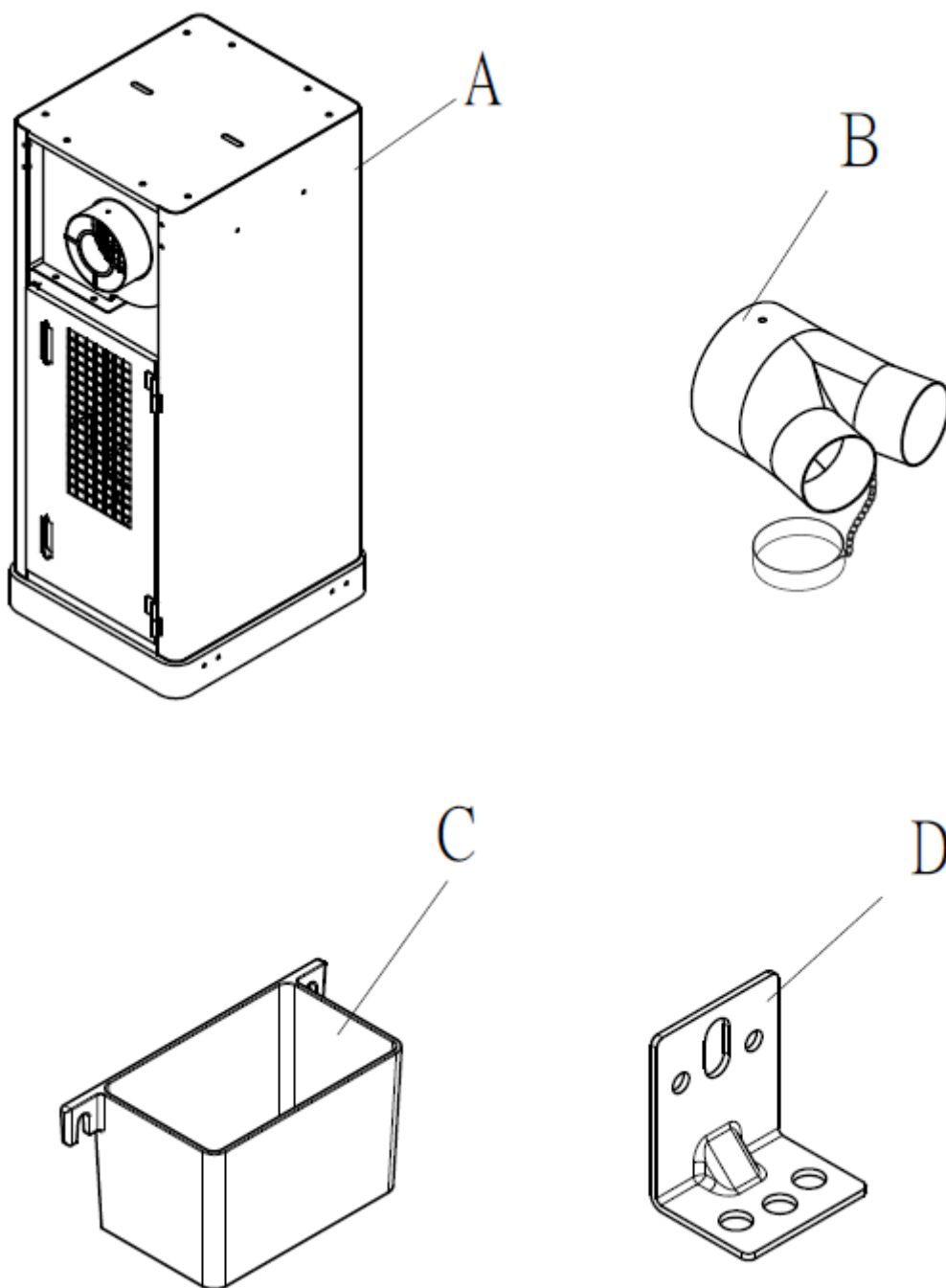
Packing Size of Base----- 910x480x525MM

N.W.----- 42.6KGS

G.W.----- 49.5KGS

Cuft.----- 8.1'

UNPACKING & CHECKING CONTENTS:



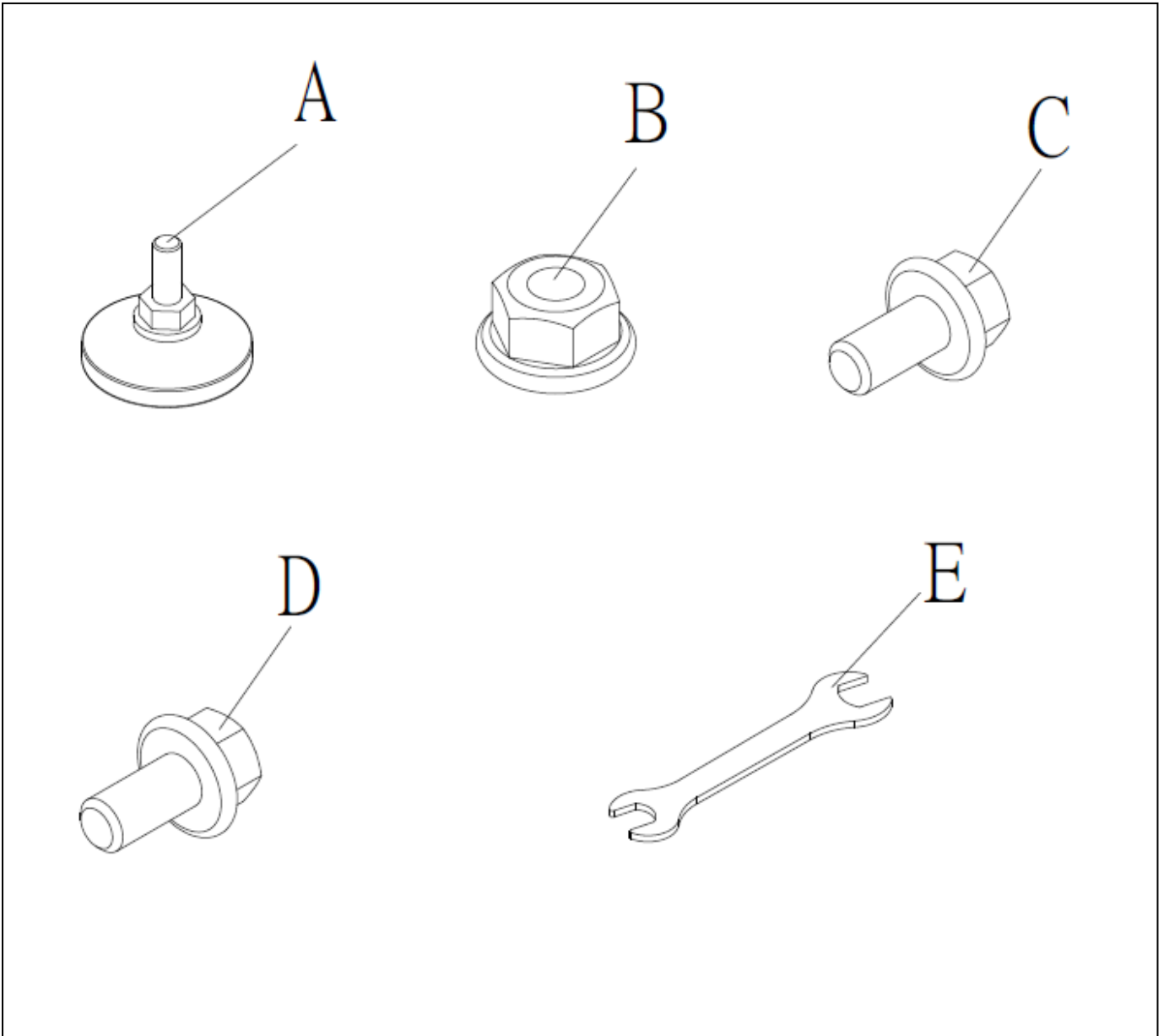
A: Main Body

B: Inlet Adaptor

C: Tray

D: Fixing Pad

Hardware package:



NO.	<u>Description</u>	<u>Specification</u>	Q'TY	Part List No.
A	Foot Pad	5/16"	4	NO. 27
B	Nut with cap	5/16"	8	NO. 28
C	Hex Flange Screw	1/4"x1/2"	8	NO. 10
D	Hex Flange Screw	1/4"x3/4"	4	NO. 18
E	Open-end Wrench	10x12	1	NO. 44

ASSEMBLY INSTRUCTION:

STEP 1-1.

Assemble the fixing pad (NO. 29) on the main body (NO. 16) with hex flange screw (NO. 10).

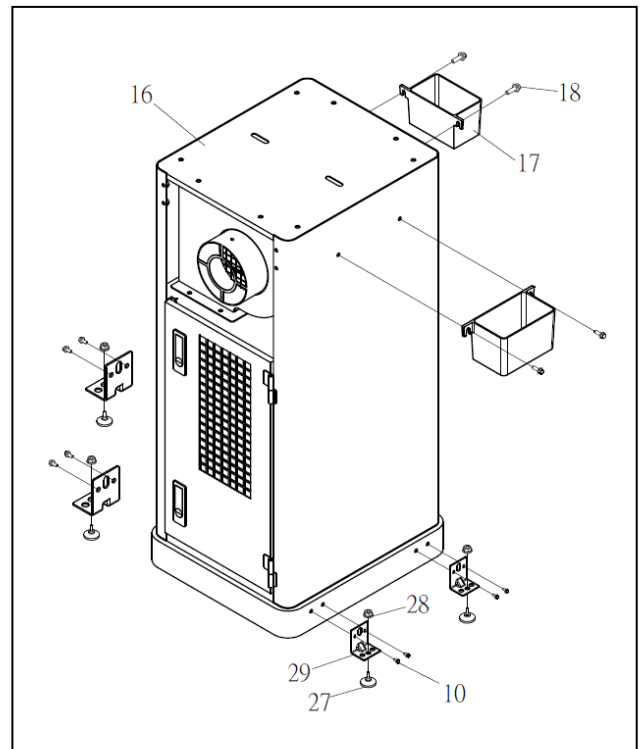
STEP 1-2.

Tight the foot pad (NO. 27) with the fixing pad (NO. 29) by using nut with cap (NO. 28).

STEP 1-3.

Tight the tray (NO. 17) on the main body (NO. 16) with hex flange screw (NO. 18).

See Fig. 1

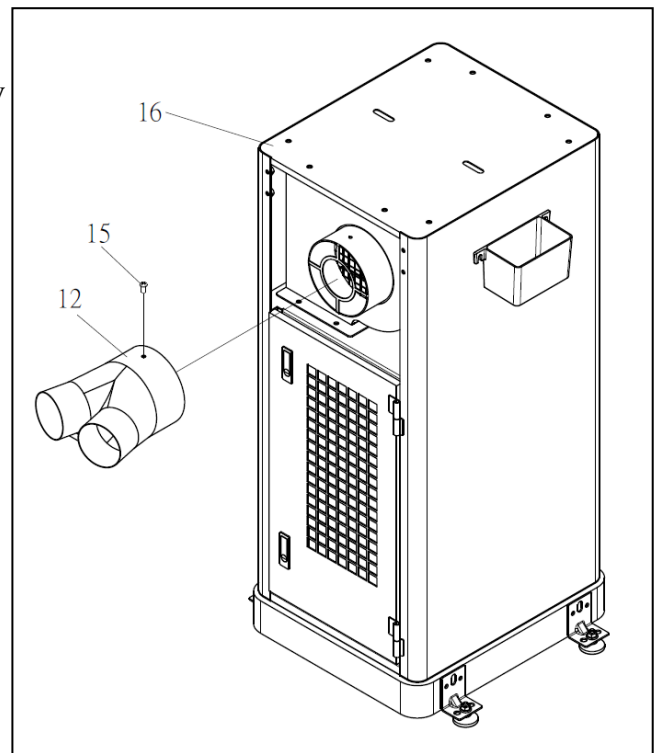


(Fig.1)

STEP 2-1

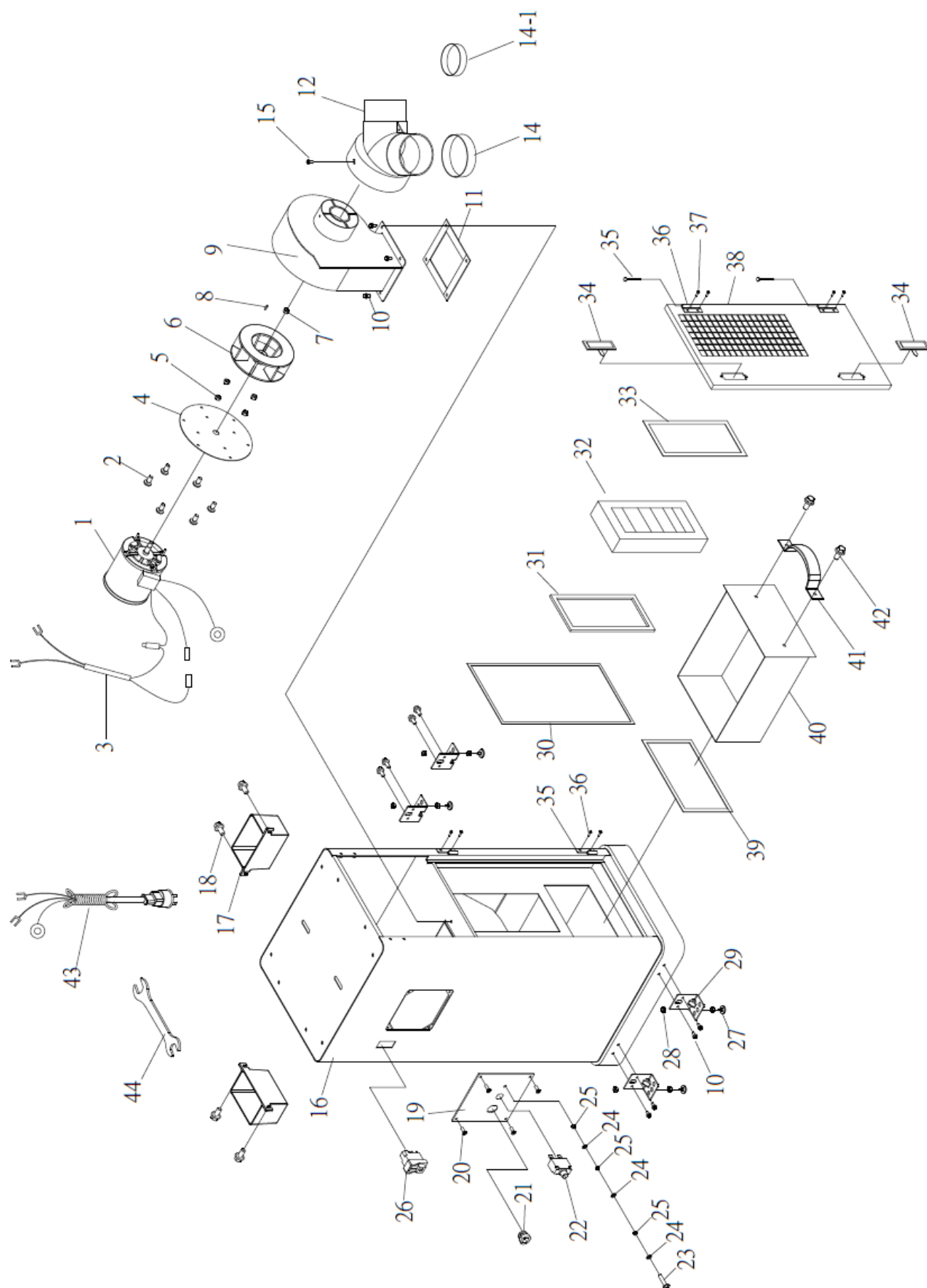
Assemble the inlet adaptor (NO. 12) on the main body (NO. 16) with phillips head screw (NO. 15).

See Fig. 2



(Fig.2)

PARTS LIST FOR MI-12910



PARTS LIST FOR MI-12910

NO.	PART NO.	DESCRIPTION	Q'TY
MI-12910-1	Motor	1/2HP	1
MI-12910-2	Phillips Head Screw	1/4"x1/2"	6
MI-12910-3	Motor Cord		1
MI-12910-4	Motor Plate		1
MI-12910-5	Lock Nut	M4	4
MI-12910-6	Impeller		1
MI-12910-7	Lock Nut	M10	1
MI-12910-8	Key	4x4x20	1
MI-12910-9	Impeller Housing		1
MI-12910-10	Hex Flange Screw	1/4"x1/2"	12
MI-12910-11	Foam Strip		1
MI-12910-12	Inlet Adaptor	5"x3"(1)x2"(1)	1
MI-12910-14	Cap	3"	1
MI-12910-14-1	Cap	2"	1
MI-12910-15	Phillips Head Screw	3/16"x3/8"	1
MI-12910-16	Main Body		1
MI-12910-17	Tray		2
MI-12910-18	Hex Flange Screw	1/4"x3/4"	4
MI-12910-19	Plate		1
MI-12910-20	Phillips Flange Head Screw	M4x8	4
MI-12910-21	Strain Relief	8R-1	1
MI-12910-22	Thermal Control Relay		1
MI-12910-23	Phillips Head Screw	3/16" x 1"	1
MI-12910-24	Lock Washer External Tooth	3/16"	3
MI-12910-25	Nut	3/16"	3
MI-12910-26	Magnetic Switch		1
MI-12910-27	Foot Pad	5/16"	4
MI-12910-28	Nut with cap	5/16"	8
MI-12910-29	Fixing Pad		4
MI-12910-30	Foam Strip		1
MI-12910-31	Foam Strip		1
MI-12910-32	Filter		1
MI-12910-33	Foam Strip		1
MI-12910-34	Door Latch		2
MI-12910-35	Bolt		2
MI-12910-36	Hinge		4
MI-12910-37	Flat Head Screws	3/16"x3/8"	8
MI-12910-38	Door		1
MI-12910-39	Foam Strip		1
MI-12910-40	Drawer		1
MI-12910-41	Handle		1
MI-12910-42	Hex Flange Screw	5/16"x1/2"	2
MI-12910-43	Power Cord		1
MI-12910-44	Open-end Wrench	10x12	1