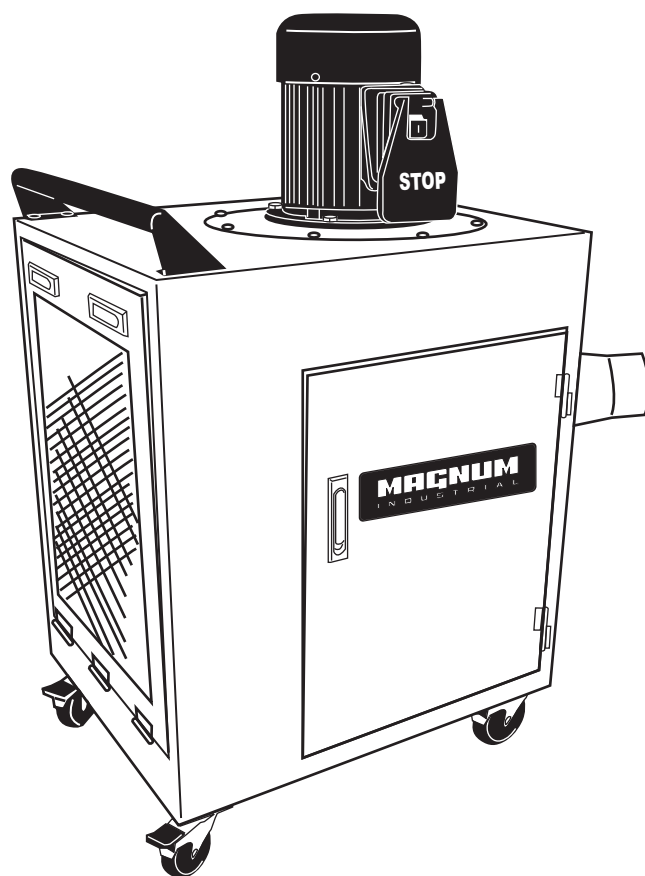


MAGNUM

I N D U S T R I A L

MODEL NO.: MI-12900



OPERATING MANUAL

GENERAL SAFETY INSTRUCTIONS FOR MACHINES

To help ensure safe operation, please take a moment to learn the machine's applications and limitations, as well as potential hazards. KMS TOOLS disclaims any real or implied warranty and holds itself harmless for any injury that may result from the improper use of its equipment.

1. Do not operate the dust collector when tired, distracted, or under the effects of drugs, alcohol or any medication that impairs reflexes or alertness.
2. The working area should be well lit, clean and free of debris.
3. Keep children and visitors at a safe distance when the dust collector is in operation; do not permit them to operate the dust collector.
4. Childproof and tamper proof your shop and all machinery with locks, master electrical switches and switch keys, to prevent unauthorized or unsupervised use.
5. Stay alert! Give your work your undivided attention. Even a momentary distraction can lead to serious injury.
6. Fine particulate dust is a carcinogen that can be hazardous to health. Work in a well-ventilated area and wear face, eye, ear, respiratory and body protection devices.
7. Do not wear loose clothing, gloves, bracelets, necklaces or other jewelry while the dust collector is in operation. Wear protective hair covering to contain long hair and wear non-slip footwear.
8. Do not insert hands, fingers or any foreign objects into ventilation inlet and outlet openings. Do not cut or break the intake screen in the inlet.
9. Do not operate this machine without all filters properly installed on the unit.
10. Clean filters on a regular basis and replace as needed.
11. Do not handle the electrical plug with wet hands.
12. Do not use this unit outdoors, on or near wet surfaces.
13. Always turn on the dust collector before starting the dust producing machine. Always turn off the dust producing machine before turning off the dust collector.
14. Do not vacuum glass, water or anything that is burning, smoking or smoldering such as cigarettes, matches or hot ashes.
15. Do not vacuum or use this dust collector near flammable or combustible liquids, gases, gasoline or other fuels, lighter fluid, cleaners, oil or solvent based paints, natural gas, hydrogen or explosive dusts like coal dust, magnesium dust, grain dust or gun powder.
16. Do not operate the unit until a dust hose is installed onto the hose inlet and make sure all the joints and connectors are properly installed.
17. Never leave the machine unattended while it is running or with the power on.
18. To avoid health hazards from vapors or dusts, do not vacuum toxic material.
19. Use only recommended accessories. Use of accessories NOT recommended by KMS TOOLS may result in a risk of injury or damage to the machine.
20. Always disconnect the unit from the power source before servicing, performing any maintenance or repairs and when changing bags or hoses, or if the machine will be left unattended.
21. Make sure that the switch is in the "OFF" position before plugging in the power cord.
22. Make sure the tool is properly grounded. If equipped with a 3-prong plug, it should be used with a three-prong receptacle. Never remove the third prong.
23. Never stand or lean on machinery. Serious injury could result if the tool is tipped over.
24. Do not use this dust collector for any purpose other than its intended use. If used for other purposes, KMS TOOLS disclaims any real or implied warranty and holds itself harmless for any injury, which may result from that use.

IMPORTANT NOTICE

The sound level of this machine is rated at approximately 85 dB during operation. Make sure that adequate hearing protection is used and that the overall sound level within the working environment is taken into consideration.

ELECTRICAL REQUIREMENTS

BEFORE CONNECTING THE MACHINE TO THE POWER SOURCE, VERIFY THAT THE VOLTAGE OF YOUR POWER SUPPLY CORRESPONDS WITH THE VOLTAGE SPECIFIED ON THE MOTOR LD. NAMEPLATE. A POWER SOURCE WITH GREATER VOLTAGE THAN NEEDED CAN RESULT IN SERIOUS INJURY TO THE USER AS WELL AS DAMAGE TO THE MACHINE. IF IN DOUBT, CONTACT QUALIFIED ELECTRICIAN BEFORE CONNECTING TO THE POWER SOURCE. THIS TOOL IS FOR INDOOR USE ONLY. DO NOT EXPOSE TO RAIN OR USE IN WET OR DAMP LOCATIONS

UNIT IS PREWIRED 220V SINGLE PHASE, TO OPERATE ON 110V YOU MUST CHANGE THE SWITCH (INCLUDED WITH EACH MACHINE) AND FOLLOW THE WIRING DIAGRAM LOCATED UNDER THE MOTOR CAP

GROUNDING INSTRUCTIONS

This appliance must be grounded. If it should malfunction or breakdown, grounding provides a path of least resistance for electric current to reduce the risk of electric shock. This appliance is equipped with a cord having an equipment-grounding conductor and grounding plug. The plug must be inserted into an appropriate outlet that is properly installed and grounded in accordance with all local codes and ordinances.

WARNING-Improper connection of the equipment-grounding conductor can result in a risk of electric shock. Check with a qualified electrician or service person if you are in doubt as to whether the outlet is properly grounded. Do not modify the plug provided with the appliance - if it will not fit the outlet, have a proper outlet installed by a qualified electrician. This appliance is for use on a circuit having a nominal rating more than 120 V and is factory-equipped with a specific electric cord and plug to permit connection to a proper electric circuit. Make sure that the appliance is connected to an outlet having the same configuration as the plug. No adaptor should be used with this appliance. If the appliance must be reconnected for use on a different type of electric circuit, the reconnection should be made by qualified service personnel.

DO NOT MODIFY THE PLUG PROVIDED

If it will not fit your receptacle, have the proper receptacle installed by a qualified electrician. CHECK with a qualified electrician or service person if you do not completely understand these grounding instructions, or if you are not sure the tool is properly grounded.

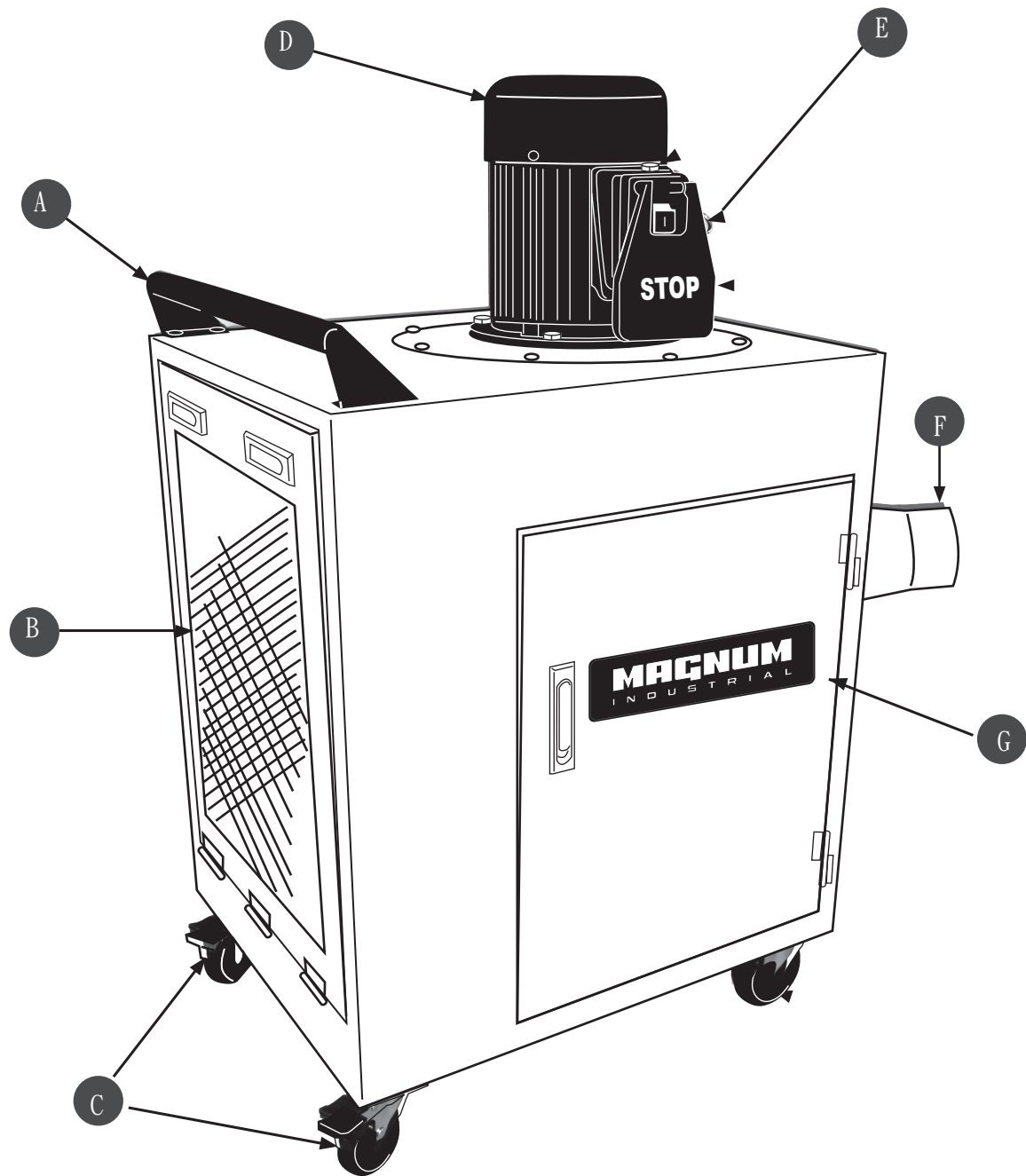
CIRCUIT CAPACITY

Make sure that the wires in your circuit are capable of handling the amperage draw from your machine, as well as any other machines that could be operating on the same circuit. If you are unsure, consult a qualified electrician. If the circuit breaker trips or the fuse blows regularly, your machine may be operating on a circuit that is close to its amperage draw capacity. However, if an unusual amperage draw does not exist and a power failure still occurs, contact a qualified technician or our service department.

EXTENSION CORDS

If you find it necessary to use an extension cord with your machine, use only 3-wire extension cords that have 3-prong grounding plug and a matching 3-pole receptacle that accepts the tool's plug. Repair or replace a damaged extension cord or plug immediately. Make sure the cord rating is suitable for the amperage listed on the motor I.D. plate. An undersized cord will cause a drop in line voltage resulting in loss of power and overheating. The accompanying chart shows the correct size extension cord to be used based on cord length and motor I.D. plate amp rating. If in doubt, use the next heavier gauge. The smaller the number the heavier the gauge.

IDENTIFICATION OF MAIN PARTS AND COMPONENTS



A. HANDLE
B. FILTER
C. CSATER
D. MOTOR
E. SWITCH

F. Y-INLET
G. DOOR

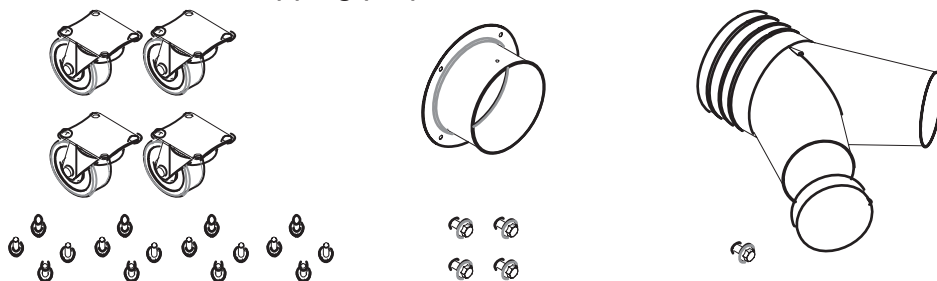
UNPACKING

The machine is properly packaged and shipped completely in a box for safe transportation. When unpacking, carefully inspect the box and ensure that nothing has been damaged during transit. Open the box and check that the machine and the parts are in good condition.

NOTICE

While doing inventory, if you can not find any part, check if the part has already been installed on the machine. Some parts come pre-assembled for shipping purposes.

- | | |
|------------------|-------|
| 1. CASTER | 4PCS |
| 2. INLET | 1PCS |
| 3. Y-INLET | 1PCS |
| 4. CARRAGE BOLT | 12PCS |
| 5. CAP SCREWS | 2PCS |
| 6. PHILIPS SCREW | 1PCS |



ASSEMBLY

To assemble your MI-92100, follow the instructions given below: The MI-92100 comes with two swivel casters and two lock swivel casters or portability. To install the casters:

1. Put a piece cardboard on the floor to prevent the dust collector body from being scratched. Get the help of a friend or assistant and position the dust collector on the cardboard on its side.
2. Attach the swivel caster to the dust collector base by aligning the four holes on the base with the four holes on the swivel caster bracket and securing it using screws provided.



To install the inlet:

Align the holes on the inlet with the holes on the dust collector and secure it using screws provided.



To install the Y-inlet :

Align the holes on the Y-inlet with the holes on the dust collector and secure it using screws provided.



ON/OFF SWITCH

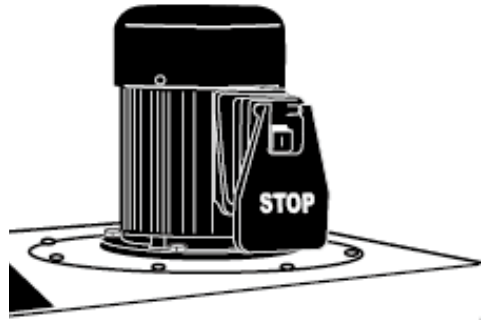
To start the machine

Lift the red stop switch panel and remove the lock-out pin. Lower the stop panel and push the green "ON" button. Wait for the dust collector to reach full speed before using.

To stop the machine

Push on the RED "STOP" panel and wait for the dust to come to a complete stop. The ON/OFF switch assembly A is equipped with a lock-out safety pin B. When the pin is installed through the green "on" button C, the machine cannot be started.

When you have finished using the machine be sure to re-install the lock-out pin and unplug the saw from the power source.



CONNECTING MACHINES TO DUST COLLECTOR

The MI-12900 features a 6" main inlet and comes with a Y-inlet having two 4" ports. When connecting machines to the dust collector, use proper sized hoses and make sure all the connections are sealed tightly. Two 4" dust port to be used with two machines at the same time. When you are using only one of the ports with a machine, simply put the end cap (provided) onto the other port.



TEST RUN

Now that you have assembled your machine completely, it is time for a test run to make sure that the machine works properly and is ready for operation. All the tools and objects used for assembling the machine should be removed and cleared away during the test run.

WARNING!

Before starting the dust collector, make sure that you have read and understood the manual and you are familiar with the functions and safety features on this machine. Failure to do so may cause serious personal injury.

Plug the cord to the power outlet and turn the dust collector ON. See if the dust collector operates correctly.

During the test run if there is any unusual noise coming from the machine or the machine vibrates excessively, shut off the machine immediately and disconnect the cord from the power source.

Check all the parts you have assembled once again and investigate to find out the problem. If the dust collector operates correctly,

Once the safety key is removed, turn the switch ON.

Turn the machine OFF and installed the safety key on the switch for safety.

MAINTENANCE

During the life of your machine, you will need to practice some regular maintenance to keep your saw in peak performance condition. Check the dust collector daily for loose mounting bolts/screws, damaged wires, worn switch, full collection bag and any other unsafe condition.

WARNING!

Make sure the machine is turned off and the cord is disconnected from the power source before servicing and removing/replacing any components on the machine.

LUBRICATION

The shaper has sealed lubricated bearings in the motor housing and arbour assembly and do not require any lubrication.

MACHINE STORAGE

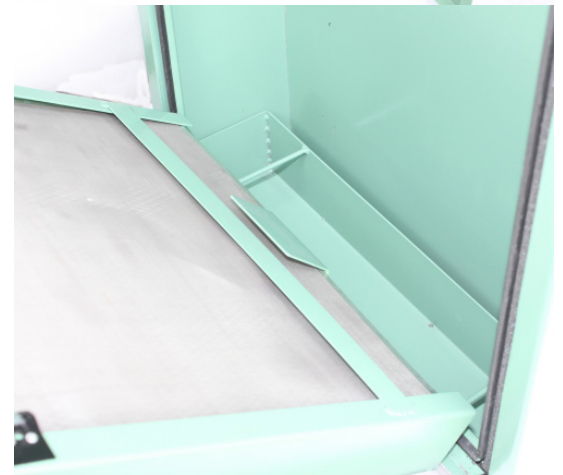
When the dust collector is not in use, disconnect the cord from the power source and store it in a dry place. Do not expose the machine to rain. Make sure to keep the cord away from potential damage sources such as; sharp objects, chemicals, heat sources and water.

EMPTYING COLLECTION DRAWER

The collection drawer inside the cabinet where it throws all the dust. The drawer on your dust collector must be checked and emptied regularly. The machine operates at a much higher level of efficiency when the collection drawer is empty. Emptying the drawer is very simple and easy.

Make sure the switch is in the OFF position and the cord is disconnected from the power source.

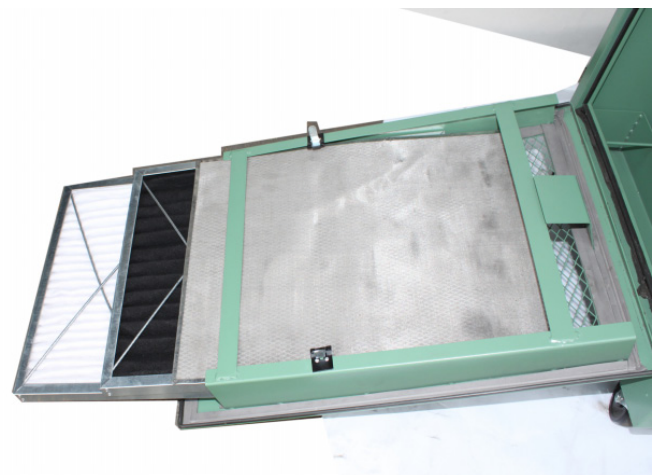
Open the cabinet door and pull the drawer out using the handle. Emptying collection drawer Open the cabinet back side door and take the drawer out using the handle. Emptying collection drawer Put its back in place and close the cabinet door.



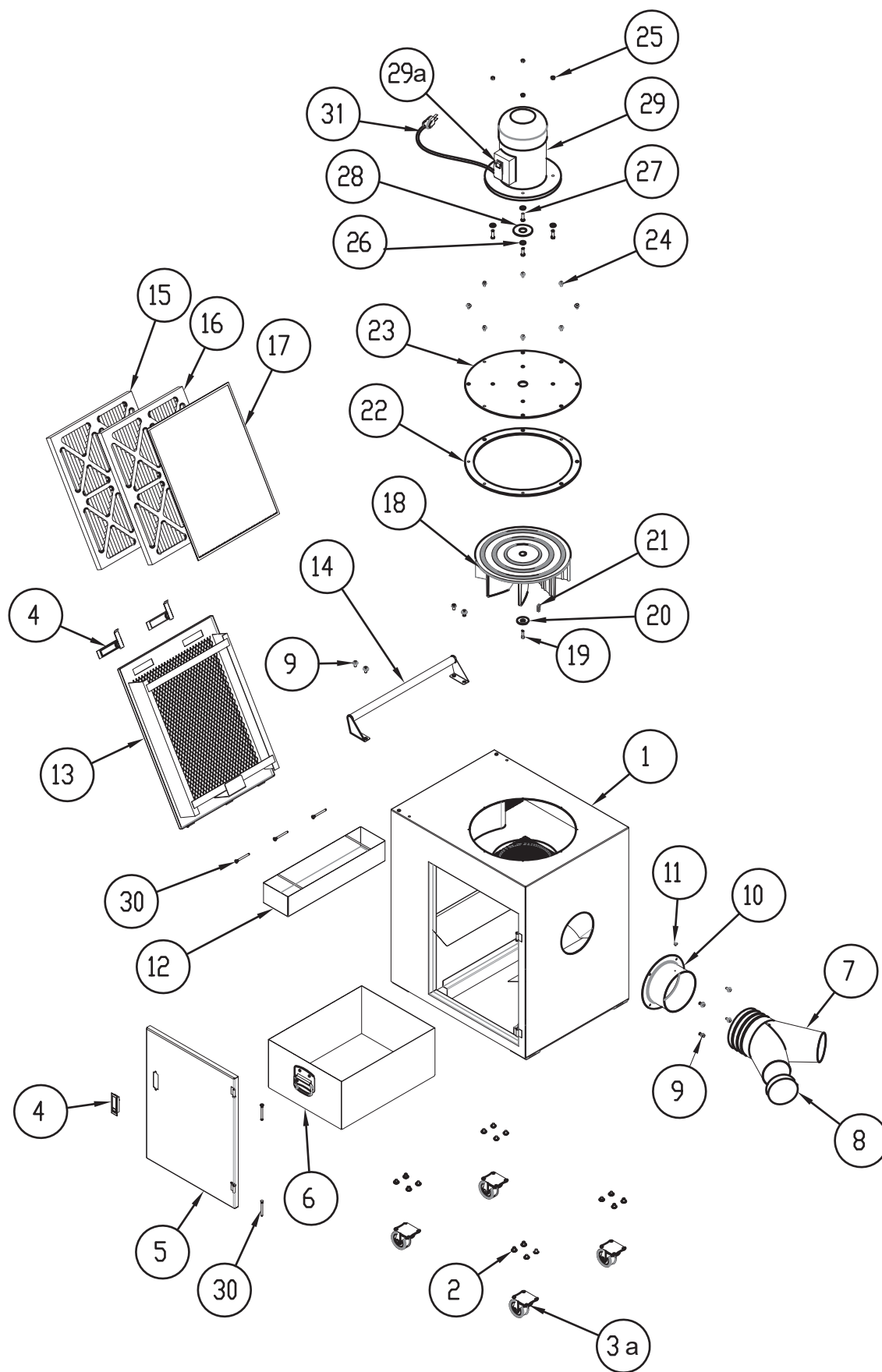
REPLACING THE FILTER

To replace the filter, make sure the switch is the OFF position and the cord is disconnected from the power source.

Open the back side door there are 3 filters on the door replace new filter and tighten the clamp to secure the new filter to the dust collector. The stainless filter can be recycle use. If the filter was dirty cleaning it and replace again.



PARTS LIST FOR MI-12900



PARTS LIST FOR MI-12900

ITEM NO.	PARTS NO.	DESCRIPTION	SPECIFICATION	Q'ty
1	MI-12900-01	MAIN BODY		1
2	MI-12900-02	FLANGE BOLT	5/16" X 3/8"	16
3a	MI-12900-03a	CASTER W / BRAKE	2.5"	4
4	MI-12900-04	LATCH		3
5	MI-12900-05	DOOR		1
6	MI-12900-06	DUST COLLECTION DRAWER		1
7	MI-12900-07	INLET	6" X 4" X 2	1
8	MI-12900-08	INLET CAP	4"	1
9	MI-12900-09	BUTTON HEAD SCREW	5/16" X 1/2"	8
10	MI-12900-10	INLET TUBE	6"	1
11	MI-12900-11	PHILLIPS HD SCREW	3/16" X 1/4"	1
12	MI-12900-12	FINE DUST COLLECTION BOX		1
13	MI-12900-13	SIDE DOOR		1
14	MI-12900-14	HANDLE		1
15	MI-12900-15	1 MICRON FILTER		1
16	MI-12900-16	ACTIVE CARBON FILTER		1
17	MI-12900-17	STAINLESS STEEL FILTER		1
18	MI-12900-18	ALUMINUM IMPELLER		1
19	MI-12900-19	CAP SCREW	M6 X 30 (LH)	1
20	MI-12900-20	IMPELLER WASHER		1
21	MI-12900-21	KEY	7 X 7 X 25	1
22	MI-12900-22	FOAM GASKET		1
23	MI-12900-23	MOTOR PLATE		1
24	MI-12900-24	BUTTON HD SCREW	1/4" X 3/8"	8
25	MI-12900-25	NUT	5/16"	4
26	MI-12900-26	WASHER	5/16"	4
27	MI-12900-27	HEX BOLT	5/16" X 1	4
28	MI-12900-28	MOTOR PACKING		1
29	MI-12900-29	MOTOR		1
29a	MI-12900-29a	SWITCH		1
30	MI-12900-30	HINGE PIN		5
31	MI-12900-31	CABLE		1