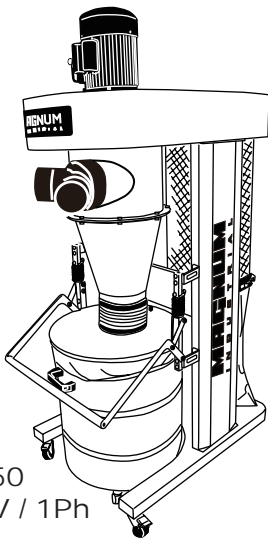


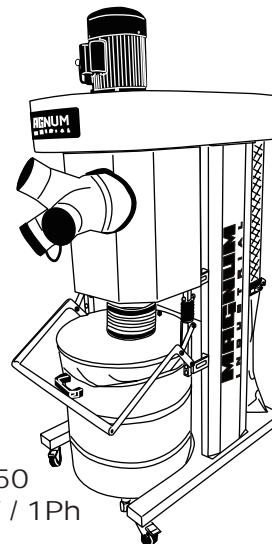
MAGNUM

INDUSTRIAL

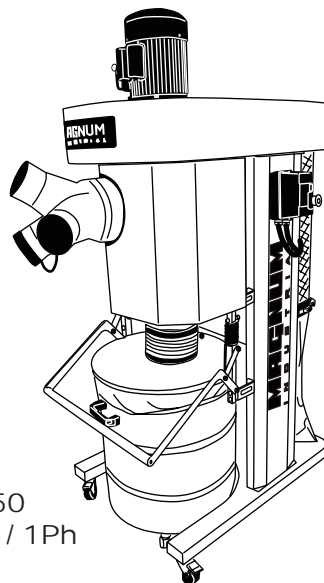
MODEL NO.: MI-12250、MI-12350
MI-12450、MI-12550
MI-12553



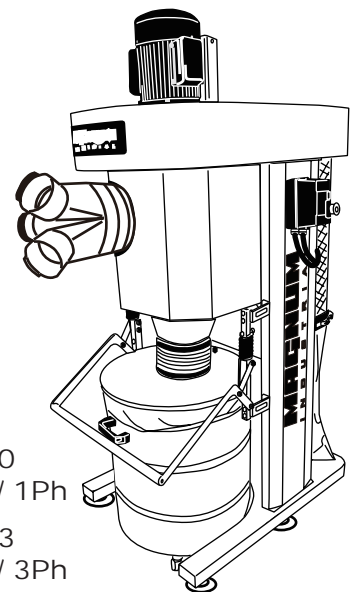
MI-12250
1.5HP / 115V / 1Ph



MI-12350
2HP / 220V / 1Ph



MI-12450
3HP / 220V / 1Ph



MI-12550
5HP / 220V / 1Ph

MI-12553
5HP / 220V / 3Ph

OPERATING MANUAL

IMPORTANT SAFETY RULES

Wood working can be dangerous if safe and proper operating procedures are not followed. As with all machinery, there are certain hazards involved with the operation of the product. Using the machine with respect and caution will considerably lessen the possibility of personal injury. However, if normal safety precautions are overlooked or ignored, personal injury to the operator may result. Safety equipment such as guards, push sticks, hold-downs, featherboards, goggles, dust masks and hearing protection can reduce your potential for injury. But even the best guard won't make up for poor judgment, carelessness or inattention. Always use common sense and exercise caution in the workshop. If a procedure feels dangerous, don't try it. Figure out an alternative procedure that feels safer. REMEMBER: Your personal safety is your responsibility.

WARNING: FAILURE TO FOLLOW THESE RULES MAY RESULT IN SERIOUS PERSONAL INJURY

1. **FOR YOUR OWN SAFETY, READ INSTRUCTION MANUAL BEFORE OPERATING THE TOOL.** Learn the tool's application and limitations as well as the specific hazards peculiar to it.
2. **KEEP GUARDS IN PLACE** and in working order.
3. **ALWAYS WEAR EYE PROTECTION.**
4. **GROUND ALL TOOLS.** If tool is equipped with three-prong plug, it should be plugged into a three-hole electrical receptacle. If an adapter is used to accommodate a two-prong receptacle, the adapter plug must be attached a known ground. Never remove the third prong.
5. **REMOVE ADJUSTING KEYS AND WRENCHES.** Form habit of checking to see that keys and adjusting wrenches are removed from tool before turning it "ON".
6. **KEEP WORK AREA AND CLEAN.** Cluttered areas and benches invite accidents.
7. **DON'T USE IN DANGEROUS ENVIRONMENT.** Don't use power tools in damp or wet location, or expose them to rain. Keep work area well light.
8. **KEEP CHILDREN AND VISITORS AWAY.** All children and visitors should be kept a safe distance from work area.
9. **MAKE WORKSHOP CHILDPROOF** - with padlocks, master switches, or by removing starter keys.
10. **DON'T FORCE TOOL.** It will do the job better and be safer at the rate for which it was designed.
11. **USE RIGHT TOOL.** Don't force tool or attachment to do a job for which it was not designed.
12. **WEAR PROPER APPAREAL.** No loose clothing, gloves, neck-ties, rings, bracelets, or other jewelry to get caught in moving parts. Non-slip footwear is recommended. Wear protective hair covering to contain long hair.
13. **ALWAYS USE SAFETY CLASSES.** Wear safety glasses. Everyday eyeglasses only have impact resistant lenses; they are not safety glasses. Also use face or dust mask if cutting operation is dusty.
14. **SECURE WORK.** Use clamps or a vise to hold work when practical. It's safer than using your hand and frees both hands to operate tool.
15. **DON'T OVERREACH.** Keep proper footing and balance at all times.
16. **MAINTAIN TOOLS IN TOP CONDITION.** Keep tools sharp and clean for best and safest performance. Follow instructions for lubricating and changing accessories.
17. **DISCONNECT TOOLS** before servicing and when changing accessories such as blades, bits cutters, etc.
18. **USE RECOMMENDED ACCESSORIES.** The use of accessories and attachments not recommended by us may cause hazards or risk of injury to persons.
19. **REDUCE THE RISK OF UNINTENTIONAL STARTING.** Make sure switch is in "OFF" position before plugging in power cord.
20. **NEVER STAND ON TOOL.** Serious injury could occur if the tool is tipped or if the cutting tool is accidentally contacted.
21. **CHECK DAMAGED PARTS.** Before further use of tool, a guard or other part that is damaged should be carefully checked to ensure that it will operate properly and perform its intended function - check for alignment of moving parts, binding of moving parts, breakage of parts, mounting, and any other conditions that may affect its operation. A guard or other part that is damaged should be properly repaired or replaced.
22. **DIRECTION OF FEED.** Feed work into a blade or cutter against the direction of the blade or cutter only.
23. **NEVER LEAVE TOOL RUNNING UNATTENDED** TURN POWER OFF. Don't leave tool until it comes to a complete stop.
24. **DRUGS, ALCHHOL, MEDICATION.** Do not operate tool while under the influence of drugs, alcohol or any medication.
25. **MAKE SURE TOOL IS DISCONNECTED FROM POWER SUPPLY** while motor is being mounted, connected or reconnected.
26. **WARNING:** The dust generated by certain woods and wood products can be injurious to your health. Always operate machinery in well-ventilated areas and provide for proper dust removal. Use wood dust collection systems whenever possible.

IMPORTANT SAFETY RULES FOR DUST COLLECTORS

WARNING: Basic precautions should be followed when using your dust collector. To reduce the risk of injury, electrical shock or fire, comply with the safety rules listed below:

1. READ and understand the instruction manual before operating the dust collector.
2. DO NOT leave the dust collector plugged into the electrical outlet. Unplug dust collector from outlet when not in use and before servicing, changing bags, unclogging and cleaning.
3. ALWAYS turn the power switch "OFF" before unplugging the dust collector.
4. **WARNING: TO REDUCE THE RISK OF ELECTRICAL SHOCK** do not use outdoors or on wet surface. Use for dry pickup only!
5. FOLLOW all electrical and safety codes, including the National Electric Code (NEC) and the Occupational Safety and Health Regulations (OSHA). Qualified personnel should make all electrical connections and wiring only.
6. DO NOT use the dust collector to pick up flammable or combustible liquids such as gasoline. NEVER use the dust collector near any flammable or combustible liquids.
7. USE the dust collector to pick up wood materials only. DO NOT use the dust collector to pick up metal shavings, dust, water, or parts.
8. NEVER use the dust collector to dissipate fumes or smoke. NEVER pick-up anything that is burning or smoking, such as cigarettes, matches or hot ashes.
9. USE only as described in this manual.
10. DO NOT pull the dust collector by the power cord. NEVER allow the power cord to come in contact with sharp edges, hot surfaces, oil or grease.
11. DO NOT unplug the dust collector by pulling on the power cord. ALWAYS grasp the plug, not the cord.
12. DO NOT handle the plug or dust collector with wet hands.
13. REPLACE a damaged cord immediately. DO NOT use a damaged cord or plug. If the dust collector is not operating properly, or has been damaged, left outdoors or has been in contact with water, return it to an Authorized Service Center for service.
14. DO NOT use the dust collector as a toy. DO NOT use near or around children.
15. DO NOT insert fingers or foreign objects into the dust intake ports. Keep hair, loose clothing, fingers, and all body parts away from openings and moving parts of the dust collector.
16. DO NOT use the dust collector without a filter bag and dust collection bag in place and properly secured.
17. DO NOT operate the dust collector with unused dust intake ports uncapped. ALWAYS cover exposed dust intake ports.
18. PERIODICALLY INSPECT dust and filter bags for any cuts, rips or tears. NEVER operate the dust collector with a damaged bag or vacuum hose.
19. The dust collector is designed for home use or light commercial duty ONLY!
20. CONNECT dust collector to a properly grounded outlet only. See Grounding Instructions.

SAVE THESE INSTRUCTIONS

GROUNDING INSTRUCTIONS

The appliance must be grounded, if it should malfunction or breakdown, grounding provides a path of least resistance for electric current to reduce the risk of electric shock. This appliance is equipped with a cord having equipment-ground conductor and grounding plug. The plug must be inserted into an appropriate outlet that is properly installed and grounded in accordance with all local codes and ordinances.

WARNING -

Improper connection of the equipment-grounding conductor can result in risk of electric shock. Check with a qualified electrician or service person if you are in doubt as to whether the outlet is properly grounded. Do not modify the plug provided with the appliance - if it will not fit the outlet; have a proper outlet installed by a qualified electrician.

For grounded, cord-connected appliances:

This appliance is for use on a circuit having a normal rating more than 120 volt and is factory-equipped with a specific electric cord and plug to a proper electric circuit. Make sure that the appliance is connected to an outlet having the same configuration as the plug. No adaptor should be used with this appliance. If the appliance must be reconnected for use on a different type of electric circuit, qualified service personnel should make the reconnection.

For a permanently connected appliance:

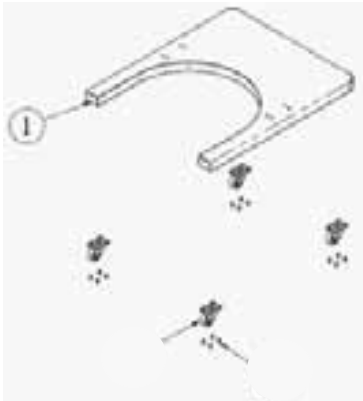
This appliance must be connected to a grounded metal, permanent wiring system; or an equipment - grounding conductor must be run with the circuit conductors and connected to the equipment grounding terminal or lead on the appliance.

Warning:

Models MI-12350, 12450,12550 .These Cyclones utilize large diameter impellor fans that momentarily require a higher amp draw until full rpm is achieved. These units will operate efficiently on 220 volt ,230, 240 volts .These machines will not perform properly on 208 volt supply. Step up transformers are required if 208 volt is your only option and need to be supplied and installed by Certified electrician.

1. Attach (4) 2 1/2" locking swivel casters to bottom of base, and secure each caster with (4) 5/16" x 1/2" flange bolts.

MI-12250 / MI-12350 / MI-12450

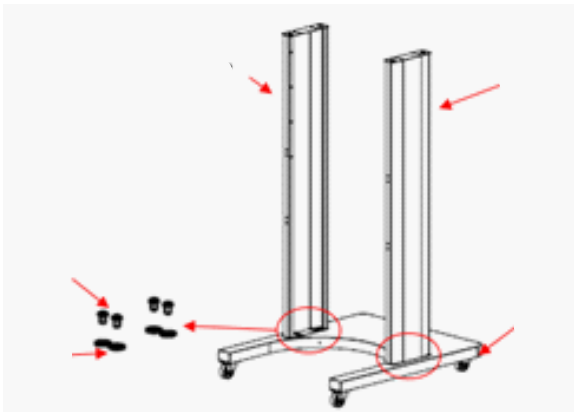


MI-12550



2. Attach each support leg to base, and finger-tighten with 5/16" x 3/4" button head socket screw and 5/16" fender washers.

MI-12250 / MI-12350 / MI-12450

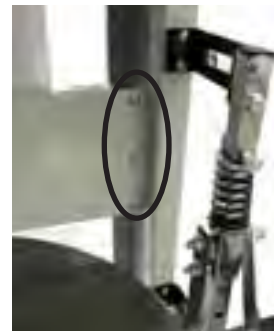


MI-12550



3. Attach reinforcing plate to each support leg with 1/4" x 1/2" button head socket screw.

MI-12250 / MI-12350



MI-12450

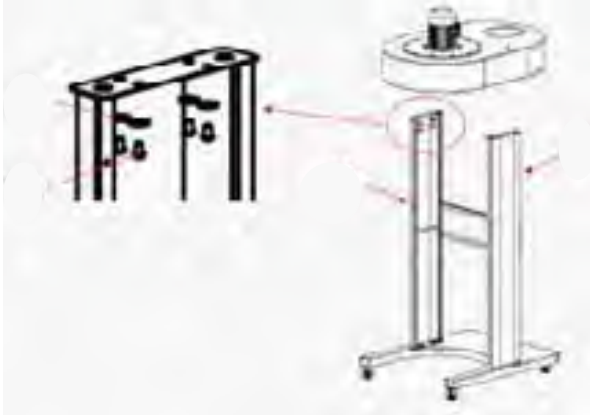


MI-12550



4. With help of two assistants, lift impeller housing onto support legs, Secure impeller housing to support legs with (8) 5/16" x 1/2" button head screws and (8) 5/16" fender washers, fully tighten all fasteners installed in Steps 2-4.

MI-12250 / MI-12350 / MI-12450



MI-12550



5. Loosen (2) Phillips head screws and remove magnetic switch cover, install magnetic switch on right or left support leg, look for pre-drilled mounting holes and secure with (2) 3/16"-24X3/4" Phillips head screws and (2) 3/16"-24 hex nuts. then replace magnetic switch cover and tighten (2) Phillips head screws.

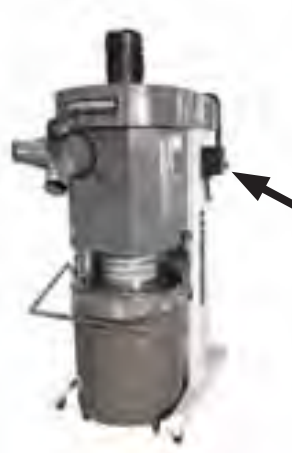


MI-12250

MI-12350

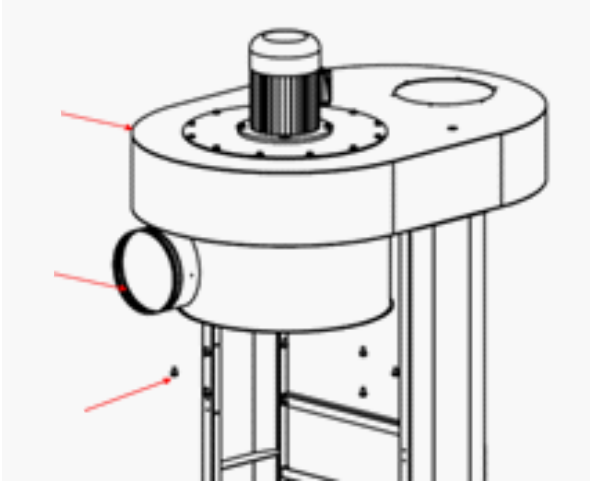
MI-12450

MI-12550



6. Attach intake barrel to impeller housing with (8) 5/16" x 3/4" flange bolts.
(MI-12250 / MI-12350 / MI-12450)

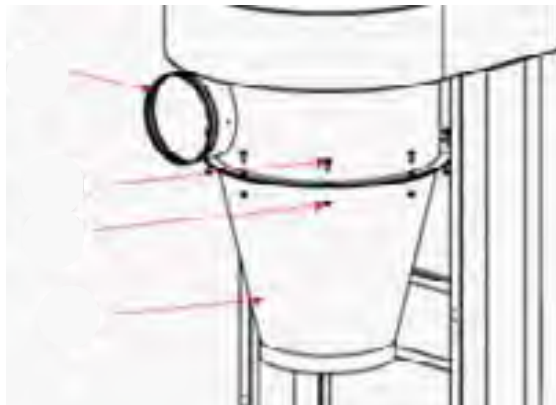
MI-12250 / MI-12350 / MI-12450



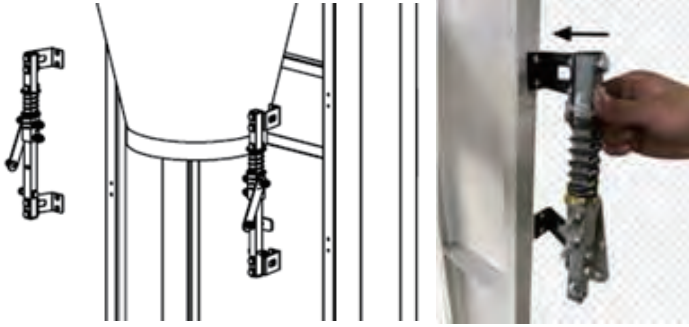
MI-12550



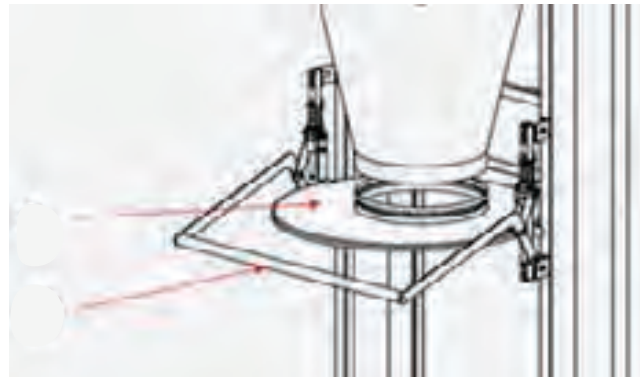
7. Attach cyclone funnel to intake barrel, using 5/16" x 3/4" flange bolts and 5/16" flange nuts



8. Secure lock handle guides to support legs.



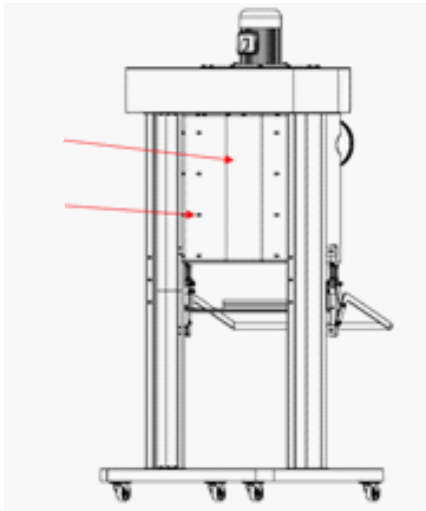
9. Using fasteners attached to spring bracket, place upper end of drum lock handle over outer stud on spring bracket, then attach lock handle link to lower hole on lock handle. With collection drum lid mounting brackets facing up, orient lid so dust port, flexible hose, and spring brackets align.



10. Attach flexible hose 8" to cyclone funnel and cyclone funnel then secure with hose clamp.



11. Attach intake barrel cover to each support leg with (8) 1/4" x 1/2" button head socket screw.



MI-12350 / MI-12450



MI-12550

12. Attach 2" swivel casters to collection drum, using (1) 5/16" hex nut on each. Adjust pre-installed flange nut and hex nut until drum rolls evenly without rocking or wobbling, then tighten both nuts to secure caster in place.

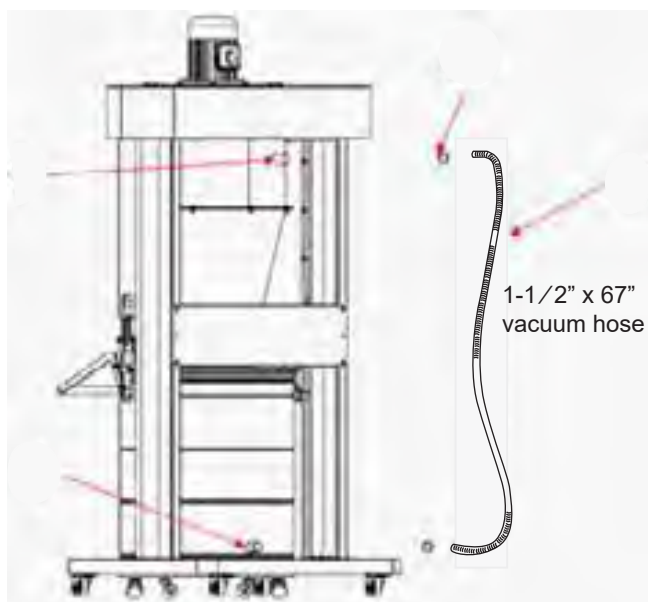


13. Insert large plastic dust bag inside collection drum, and fold excess length of bag over top of collection drum.



14. Place 1 1/2" hose clamps on each end of 1 1/2" x 67" vacuum hose, then connect hose to ports on cyclone funnel and collection drum.

MI-12250 / MI-12350 / MI-12450



MI-12550



15. While assistant holds canister filter under impeller housing, reach into impeller housing and attach canister filter to impeller housing with 5/16" x 3/4" flange bolts.



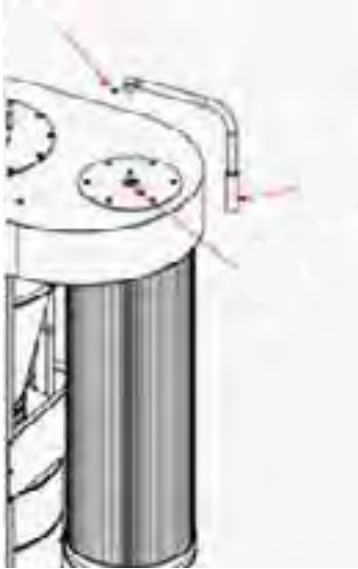
16. Insert filter handle spindle so one of two M6 x 16 cap screw tips aligns with flat on side of filter paddle spindle, then tighten both cap screws to secure spindle.



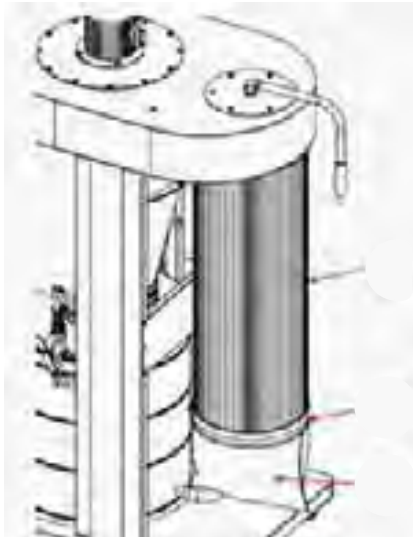
17. Slide filter paddle cover over filter handle spindle, then secure with (6) 5/16" x 3/4" flange bolts.



18. Install filter cleaning handle on spindle so that M6 x 16 hex bolt tip aligns with spindle flat, then tighten hex bolt.



19. Attach plastic filter bag to canister filter and secure with bag clamp.



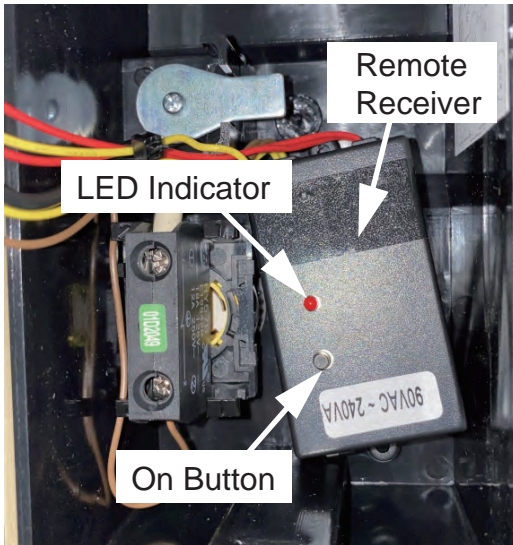
20. Install inlet adapter on dust port and secure with 3/16" x 3/8" flange screw.



21. Test run.

Programming Receiver

The Models MI-12250,MI-12350,MI-12450,MI-12550 are equipped with a remote control receiver that can be programmed to operate up to 5 separate controllers.



! WARNING

Avoid touching electrified parts inside receiver while performing procedure below! Touching electrified parts will result in serious personal injury, such as severe burns, electrocution, or death. Use a wood dowel or other non-conducting item to push button on receiver.

To program receiver:

1. Remove switch cover to get a clear view of remote receiver (Fig A).
2. To erase any current remote transmitter codes, press black ON button on receiver and hold down until LED indicator on receiver begins to flash (Fig A).
3. Press either ON or OFF button on remote (Fig A). When LED indicator stops flashing, remote control is programmed.



Note: To pair more than one remote to receiver, press ON or OFF button of remaining remote(s) before proceeding to Step 4.

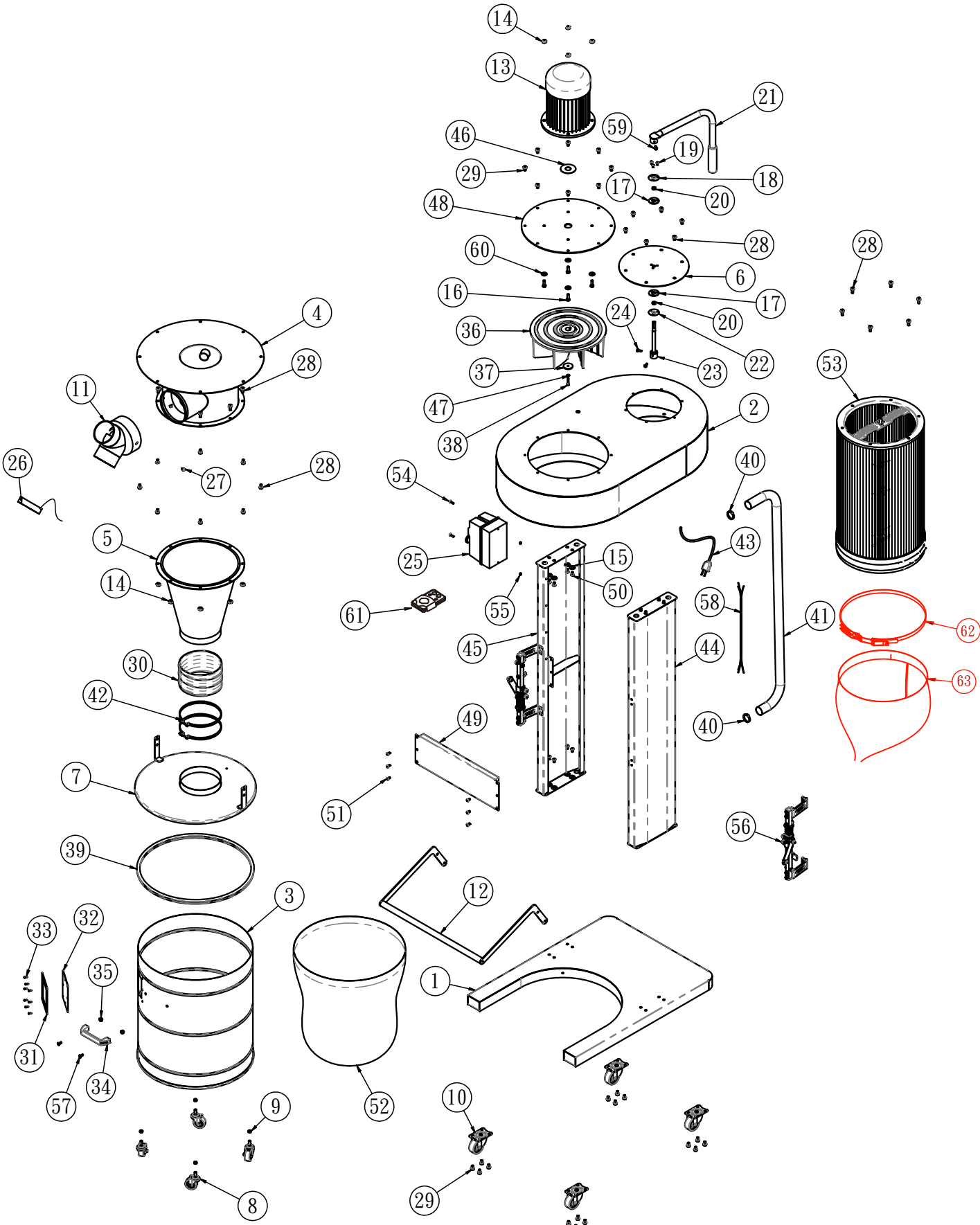
4. Install switch cover removed in Step 1.

5. If remote not working or only working close range carefully change battery use LICB 27A 12V ALKALINE BATTERY

PARTS LIST FOR MI-12250



PARTS LIST FOR MI-12250

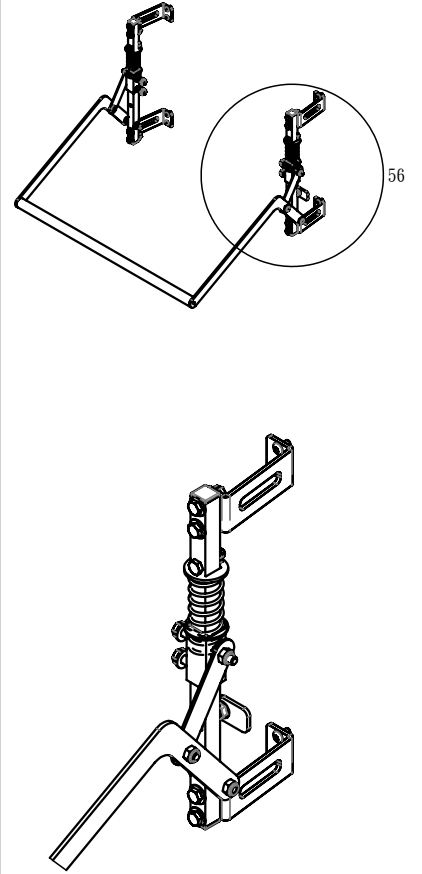
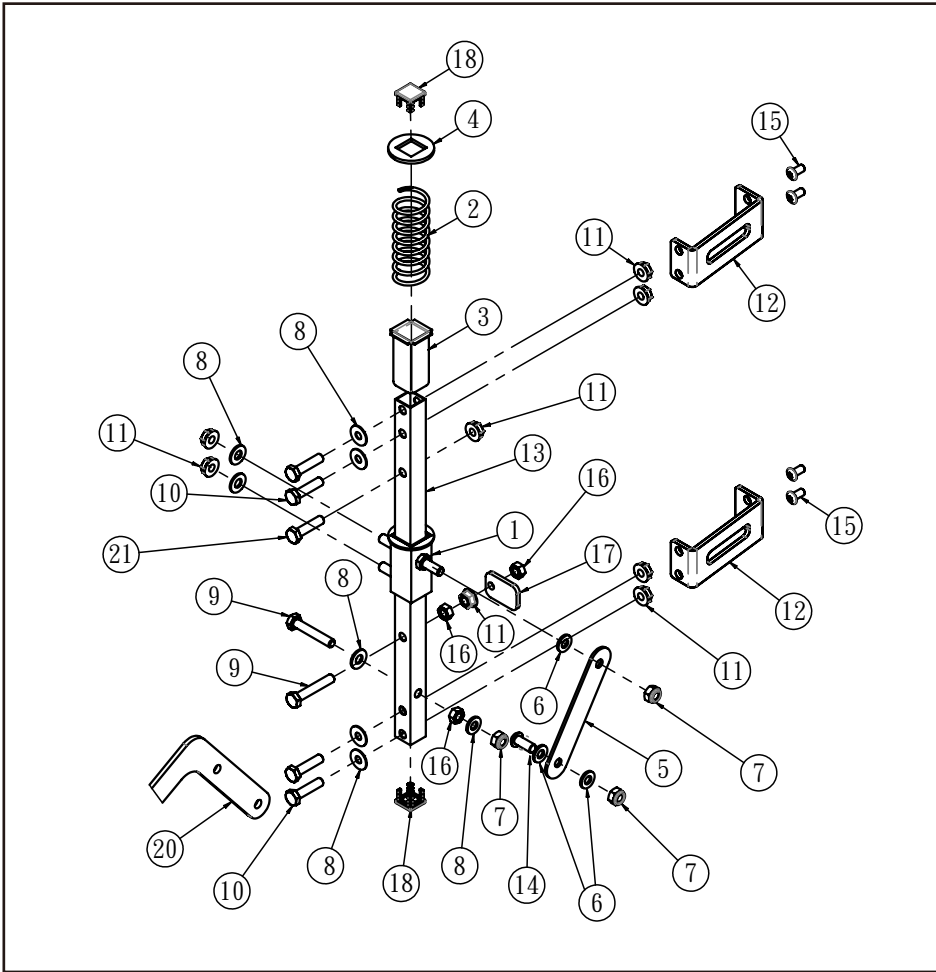


PARTS LIST FOR MI-12250

No.	Description	Qty	No.	Description	Qty
MI-12250-01	BASE	1	MI-12250-38	CAP SCREW M6-1 X 30 LH	1
MI-12250-02	IMPELLER HOUSING	1	MI-12250-39	COLLECTION DRUM GASKET	1
MI-12250-03	COLLECTION DRUM	1	MI-12250-40	HOSE CLAMP 1-3/4"	2
MI-12250-04	INTAKE BARREL	1	MI-12250-41	VACUUM HOSE 1-1/2" X 60"	1
MI-12250-05	CYCLONE FUNNEL	1	MI-12250-42	HOSE CLAMP 7-1/2"	2
MI-12250-06	FILTER COVER PLATE	1	MI-12250-43	POWER CORD 14G 3W 72" 5-15P	1
MI-12250-07	COLLECTION DRUM LID	1	MI-12250-44	SUPPORT LEG(RIGHT)	1
MI-12250-08	CASTER 2"	4	MI-12250-45	SUPPORT LEG(LEFT)	1
MI-12250-09	HEX NUT 5/16"-18	4	MI-12250-46	RUBBER GASKET	1
MI-12250-10	CASTER 2-1/2", LOCKING SWIVEL	4	MI-12250-47	SPRING WASHER 1/4"	1
MI-12250-11	INLET ADAPTER 6" X 4" X 2	1	MI-12250-48	MOTOR COVER PLATE	1
MI-12250-12	DRUM LOCK HANDLE	1	MI-12250-49	SUPPORTING BOARD	1
MI-12250-13	MOTOR 1.5HP 115V	1	MI-12250-50	BUTTON HD CAP SCR 5/16"-18 X 3/4"	16
MI-12250-14	FLANGE NUT 5/16"-18	12	MI-12250-51	BUTTON HD CAP SCR 1/4"-20 X 1/2	6
MI-12250-15	WASHER 5/16" X 23mm	16	MI-12250-52	COLLECTION DRUM BAG	1
MI-12250-16	HEX BOLT 5/16"-18 X 14mm	4	MI-12250-53	CANISTER FILTER ASSY	1
MI-12250-17	RUBBER GASKET	2	MI-12250-54	PHLP HD SCR 3/16"- 24 X 3/4"	2
MI-12250-18	BEARING RETAINER, UPPER	1	MI-12250-55	HEX NUT 3/16"- 24	2
MI-12250-19	PHLP HD SCR M5-0.8 X 10mm	3	MI-12250-56	LOCK HANDLE GUIDE ASSY	2
MI-12250-20	SLEEVE BEARING 12 X 14 X 6mm	2	MI-12250-57	PHLP HD SCR 1/4"-20 X 5/8"	2
MI-12250-21	FILTER PADDLE HANDLE	1	MI-12250-58	MOTOR CORD 14G 3W	1
MI-12250-22	BEARING RETAINER, LOWER	1	MI-12250-59	HEX SCEEW	1
MI-12250-23	PADDLE HANDLE SPINDLE	1	MI-12250-60	WASHER 5/16" X 18	4
MI-12250-24	CAP SCREW M6-1 X 16mm	3	MI-12250-61	REMOTE CONTROL	1
MI-12250-25	MAG SWITCH WITH REMOTE RECEIVER	1	MI-12250-62	BAG CLAMP 15"	1
MI-12250-26	INLET ADAPTER CAP 4"	1	MI-12250-63	COLLECTION DRUM BAG 30" X 41"	1
MI-12250-27	PHLP HD SCR 3/16" - 24 X 3/8"	1			
MI-12250-28	FLANGE BOLT 5/16-18 X 3/4"	28			
MI-12250-29	FLANGE BOLT 5/16-18 X 1/2"	24			
MI-12250-30	FLEX HOSE 7"	1			
MI-12250-31	FOAM GASKET 120 X 140MM	1			
MI-12250-32	DRUM WINDOW 120 X 140MM ACRYLIC	1			
MI-12250-33	RIVET 2 X 4MM ALUMINUM	8			
MI-12250-34	COLLECTION DRUM HANDLE	1			
MI-12250-35	ACORN NUT 1/4-20	2			
MI-12250-36	IMPELLER 12-3/4"	1			
MI-12250-37	IMPELLER WASHER 6 X 38 X 4MM	1			

PARTS LIST FOR MI-12250

MI-12250-56

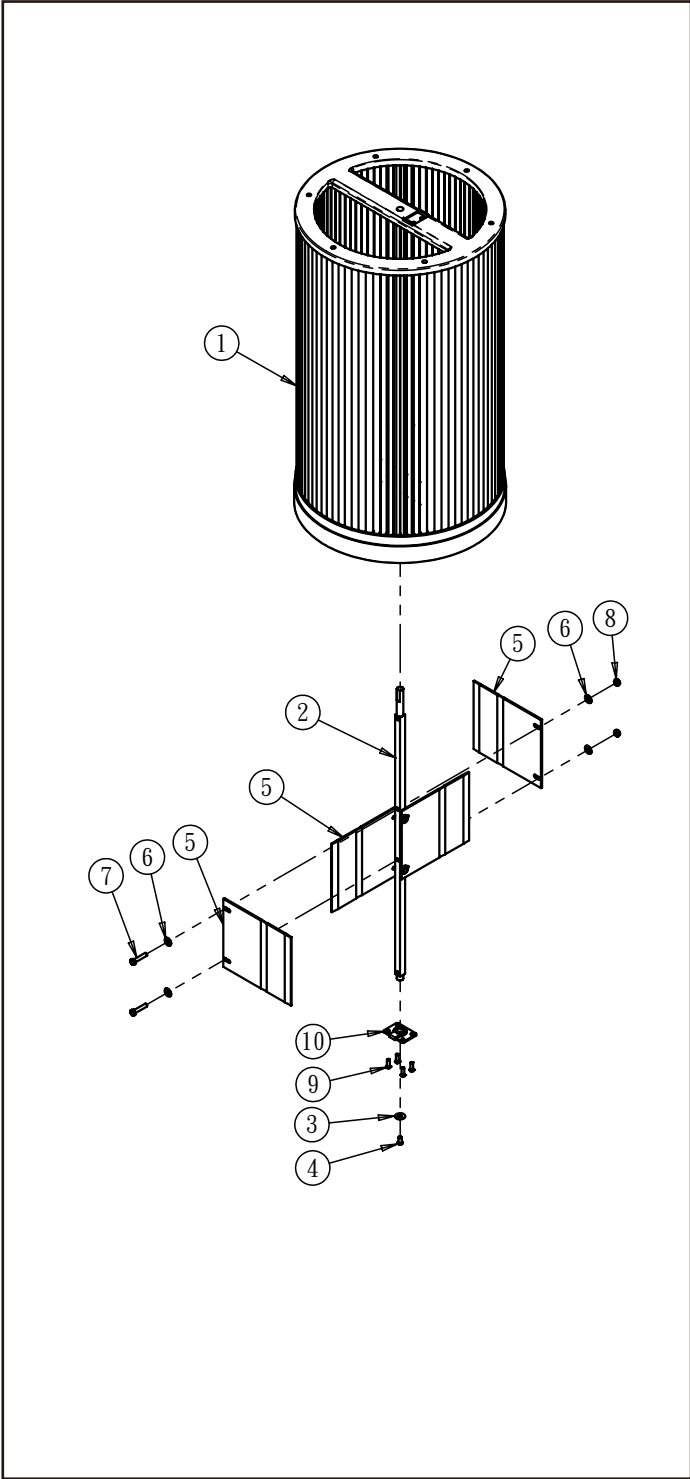


PARTS LIST FOR MI-12250-56

No.	Description	Qty
MI-12250-56-01	SLIDING BRACKET	2
MI-12250-56-02	COMPRESSION SPRING 3 X 33 X 70	2
MI-12250-56-03	COPPER PLATE	8
MI-12250-56-04	SPRING RETAINER	2
MI-12250-56-05	LOCK HANDLE LINK	2
MI-12250-56-06	FLAT WASHER 3/8 PLASTIC	6
MI-12250-56-07	LOCK NUT 5/16-18	6
MI-12250-56-08	WASHER 5/16"	14
MI-12250-56-09	HEX BOLT 5/16-18 X 1-3/4	3
MI-12250-56-10	HEX BOLT 5/16-18 X 1-1/2"	8
MI-12250-56-11	FLANGE NUT 5/16-18	13
MI-12250-56-12	LOCK HANDLE GUIDE FIXING PIECE	4
MI-12250-56-13	LOCK HANDLE GUIDE	2
MI-12250-56-14	BUTTON HD CAP SCR 5/16-18 X 3/4	2
MI-12250-56-15	BUTTON HD CAP SCR 1/4-20 X 1/2	8
MI-12250-56-16	HEX NUT 5/16-18	4
MI-12250-56-17	LOCK HANDLE STOP	1
MI-12250-56-18	END CAP	4
MI-12250-56-20	DRUM LID LIFT HANDLE	1
MI-12250-56-21	HEX BOLT 5/16 X 2"	2

PARTS LIST FOR MI-12250

MI-12250-53



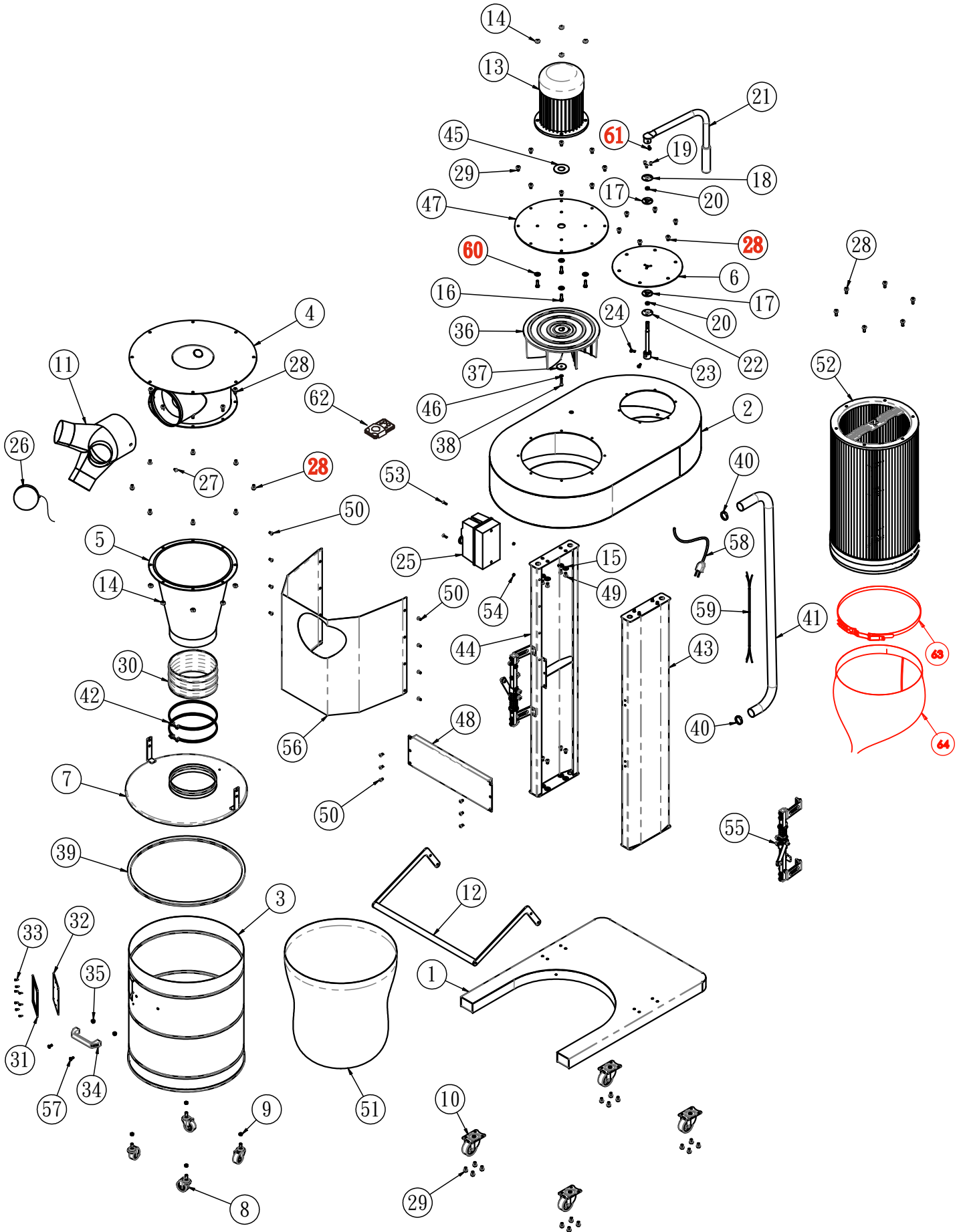
PARTS LIST FOR MI-12250-53

No.	Description	Qty
MI-12250-53-01	CANISTER FILTER	1
MI-12250-53-02	FILTER PADDLE SPINDLE	1
MI-12250-53-03	WASHER 1/4 x 18	1
MI-12250-53-04	PHLP HD SCR M6 X 12	1
MI-12250-53-05	FILTER PADDLE	4
MI-12250-53-06	WASHER 1/4 x 16	8
MI-12250-53-07	HEX BOLT 1/4"-20 X 1-1/4"	4
MI-12250-53-08	LOCK NUT 1/4"(THIN)	4
MI-12250-53-09	PHLP HD SCR M5-0.8 X15	4
MI-12250-53-10	SPINDLE BRACKET CAP	1

PARTS LIST FOR MI-12350



PARTS LIST FOR MI-12350

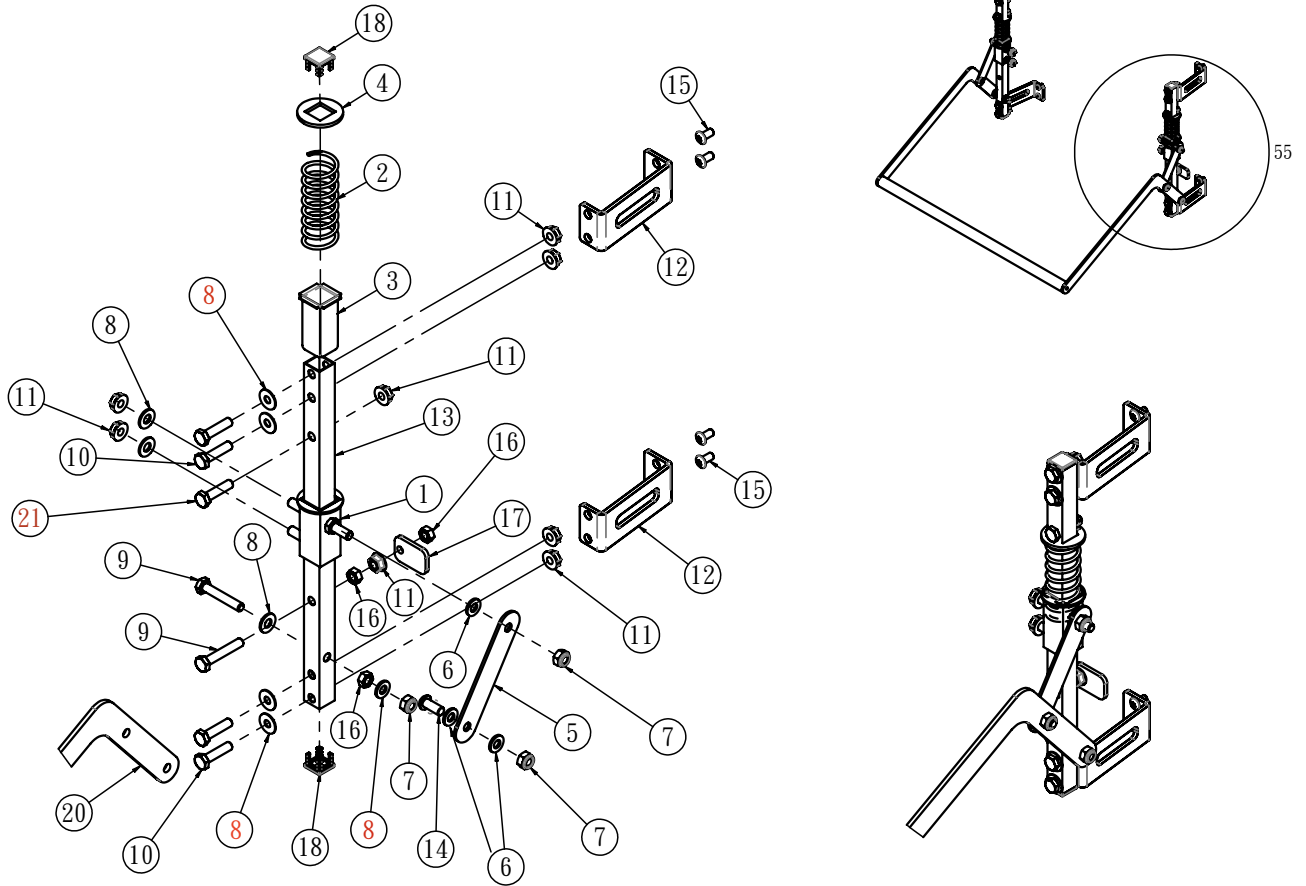


PARTS LIST FOR MI-12350

No.	Description	Qty	No.	Description	Qty
MI-12350-01	BASE	1	MI-12350-38	CAP SCREW M6-1 X 30LH	1
MI-12350-02	IMPELLER HOUSING	1	MI-12350-39	COLLECTION DRUM GASKET	1
MI-12350-03	COLLECTION DRUM	1	MI-12350-40	HOSE CLAMP 1-3/4"	2
MI-12350-04	INTAKE BARREL	1	MI-12350-41	VACUUM HOSE 1-1/2" X 67"	1
MI-12350-05	CYCLONE FUNNEL	1	MI-12350-42	HOSE CLAMP 8-1/2"	2
MI-12350-06	FILTER COVER PLATE	1	MI-12350-43	SUPPORT LEG(RIGHT)	1
MI-12350-07	COLLECTION DRUM LID	1	MI-12350-44	SUPPORT LEG(LEFT)	1
MI-12350-08	CASTER 2"	4	MI-12350-45	RUBBER GASKET	1
MI-12350-09	HEX NUT 5/16"-18	4	MI-12350-46	SPRING WASHER 1/4"	1
MI-12350-10	CASTER 2-1/2", LOCKING SWIVEL	4	MI-12350-47	MOTOR COVER PLATE	1
MI-12350-11	INLET ADAPTER 7" X 4" X 3	1	MI-12350-48	SUPPORTING BOARD	1
MI-12350-12	DRUM LOCK HANDLE	1	MI-12350-49	BUTTON HD CAP SCR 5/16"-18 X 3/4"	16
MI-12350-13	MOTOR 2HP 220V 1-PH	1	MI-12350-50	BUTTON HD CAP SCR 1/4"-20 X 1/2	14
MI-12350-14	FLANGE NUT 5/16"-18	12	MI-12350-51	COLLECTION DRUM BAG	1
MI-12350-15	WASHER 5/16" X 23mm	16	MI-12350-52	CANISTER FILTER ASSY (MI-12250-53)	1
MI-12350-16	HEX BOLT 5/16"-18 X 1-1/4mm	4	MI-12350-53	PHLP HD SCR 3/16"- 24 X 3/4"	2
MI-12350-17	RUBBER GASKET	2	MI-12350-54	HEX NUT 3/16"- 24	2
MI-12350-18	BEARING RETAINER, UPPER	1	MI-12350-55	LOCK HANDLE GUIDE ASSY	2
MI-12350-19	PHLP HD SCR M5-0.8 X 10mm	3	MI-12350-56	INTAKE BARREL COVER	1
MI-12350-20	SLEEVE BEARING 12 X 14 X 6mm	2	MI-12350-57	PHLP HD SCR 1/4"-20 X 5/8"	2
MI-12350-21	FILTER PADDLE HANDLE	1	MI-12350-58	POWER CORD 14G 3W 72" 6-15P	1
MI-12350-22	BEARING RETAINER, LOWER	1	MI-12350-59	MOTOR CORD 14G 3W	1
MI-12350-23	PADDLE HANDLE SPINDLE	1	MI-12350-60	WASHER 5/16" X 18	4
MI-12350-24	CAP SCREW M6-1 X 16mm	2	MI-12350-61	HEX BOLT	1
MI-12350-25	MAG SWITCH WITH REMOTE RECEIVER	1	MI-12350-62	REMOTE CONTROL	1
MI-12350-26	INLET ADAPTER CAP 4"	1	MI-12350-63	BAG CLAMP 15"	1
MI-12350-27	PHLP HD SCR 3/16" - 24 X 3/8"	1	MI-12350-64	COLLECTION DRUM BAG 30" X 41"	1
MI-12350-28	FLANGE BOLT 5/16-18 X 3/4"	28			
MI-12350-29	FLANGE BOLT 5/16-18 X 1/2"	24			
MI-12350-30	FLEX HOSE 8"	1			
MI-12350-31	FOAM GASKET 120 X 140MM	1			
MI-12350-32	DRUM WINDOW 120 X 140MM ACRYLIC	1			
MI-12350-33	RIVET 2 X 4MM ALUMINUM	8			
MI-12350-34	COLLECTION DRUM HANDLE	1			
MI-12350-35	ACORN NUT 1/4-20	2			
MI-12350-36	IMPELLER 12-3/4"	1			
MI-12350-37	IMPELLER WASHER 6 X 38 X 4MM	1			

PARTS LIST FOR MI-12350

MI-12350-55

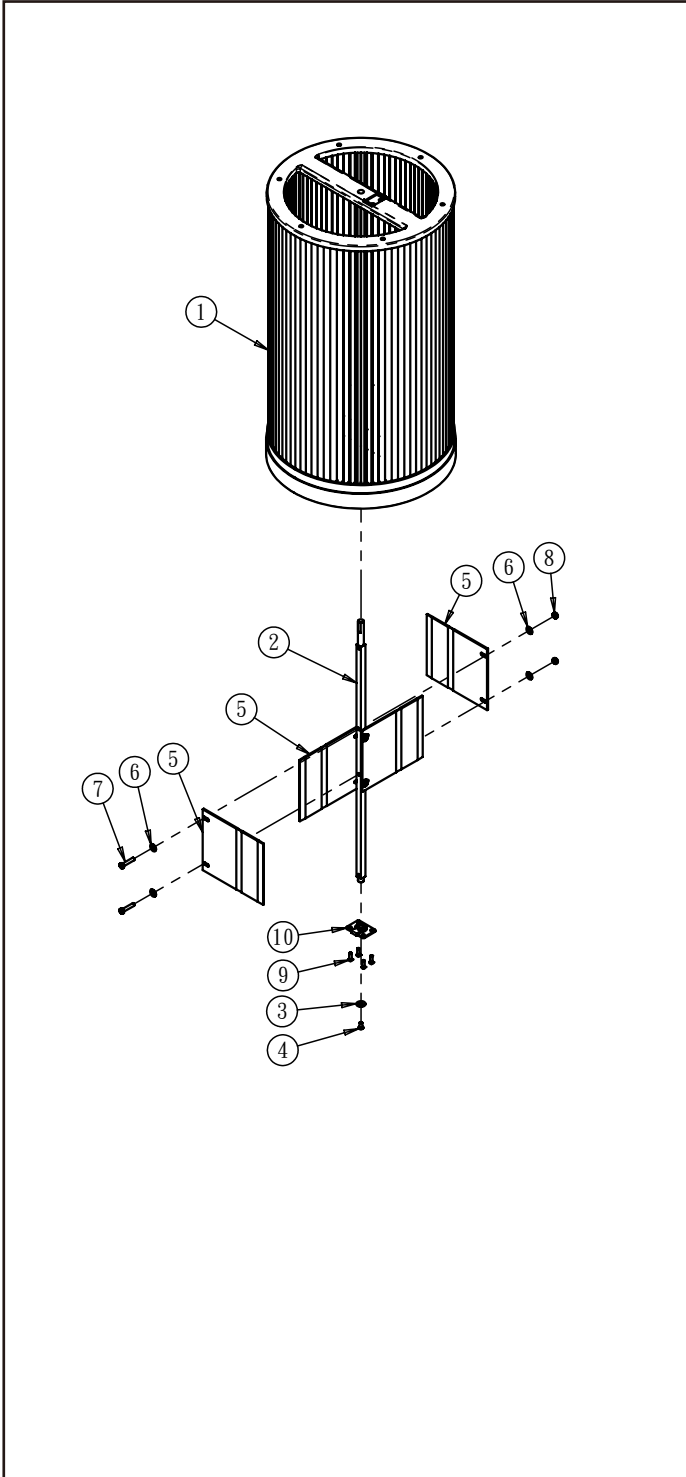


PARTS LIST FOR MI-12350-55

No.	Description	Qty
MI-12350-55-01	SLIDING BRACKET	2
MI-12350-55-02	COMPRESSION SPRING 3 X 33 X 70	2
MI-12350-55-03	COPPER PLATE	8
MI-12350-55-04	SPRING RETAINER	2
MI-12350-55-05	LOCK HANDLE LINK	2
MI-12350-55-06	FLAT WASHER 3/8 PLASTIC	6
MI-12350-55-07	LOCK NUT 5/16-18	6
MI-12350-55-08	WASHER 5/16"	6
MI-12350-55-09	HEX BOLT 5/16-18 X 1-3/4	3
MI-12350-55-10	HEX BOLT 5/16-18 X 1-1/4	10
MI-12350-55-11	FLANGE NUT 5/16-18	17
MI-12350-55-12	LOCK HANDLE GUIDE FIXING PIECE	4
MI-12350-55-13	LOCK HANDLE GUIDE	2
MI-12350-55-14	BUTTON HD CAP SCR 5/16-18 X 3/4	2
MI-12350-55-15	BUTTON HD CAP SCR 1/4-20 X 1/2	8
MI-12350-55-16	HEX NUT 5/16-18	4
MI-12350-55-17	LOCK HANDLE STOP	1
MI-12350-55-18	END CAP	4
MI-12350-55-19	WASHER 1/4"	8
MI-12350-55-20	DRUM LID LIFT HANDLE	1
MI-12250-56-21	HEX BOLT 5/16 X 2"	2

PARTS LIST FOR MI-12350

MI-12350-52



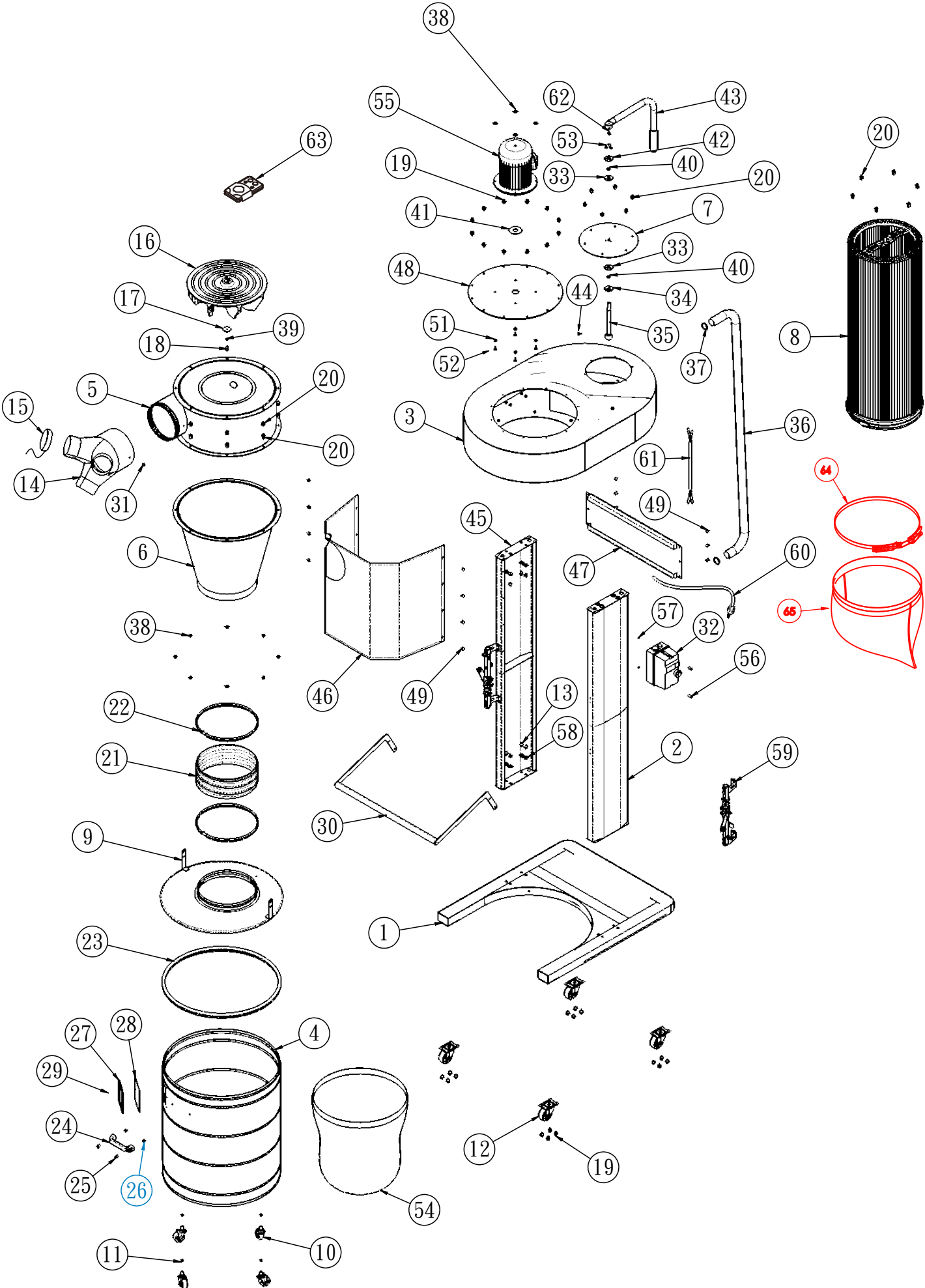
PARTS LIST FOR MI-12350-52

No.	Description	Qty
MI-12350-52-01	CANISTER FILTER	1
MI-12350-52-02	FILTER PADDLE SPINDLE	1
MI-12350-52-03	WASHER 1/4 x 18	1
MI-12350-52-04	PHLP HD SCR M6 X 12	1
MI-12350-52-05	FILTER PADDLE	4
MI-12350-52-06	WASHER 1/4 x 16	8
MI-12350-52-07	HEX BOLT 1/4"-20 X 1-1/4"	4
MI-12350-52-08	LOCK NUT 1/4"(THIN)	4
MI-12350-52-09	PHLP HD SCR M5-0.8 X15	4
MI-12350-52-10	SPINDLE BRACKET CAP	1

PARTS LIST FOR MI-12450



PARTS LIST FOR MI-12450



PARTS LIST FOR MI-12450

No.	Description	Qty	No.	Description	Qty
MI-12450-01	BASE	1	MI-12450-33	RUBBER GASKET	2
MI-12450-02	SUPPORT LEG(RIGHT)	1	MI-12450-34	BEARING RETAINER, LOWER	1
MI-12450-03	IMPELLER HOUSING	1	MI-12450-35	PADDLE HANDLE SPINDLE	1
MI-12450-04	COLLECTION DRUM	1	MI-12450-36	VACUUM HOSE 1-1/2"	1
MI-12450-05	INTAKE BARREL	1	MI-12450-37	HOSE CLAMP 1-3/4"	2
MI-12450-06	CYCLONE FUNNEL	1	MI-12450-38	FLANGE NUT 5/16"-18	8
MI-12450-07	FILTER COVER PLATE	1	MI-12450-39	SPRING WASHER 1/4"	1
MI-12450-08	CANISTER FILTER ASSY	1	MI-12450-40	SLEEVE BEARING 12 X 14 X 6mm	2
MI-12450-09	COLLECTION DRUM LID	1	MI-12450-41	RUBBER GASKET	1
MI-12450-10	CASTER 2"	4	MI-12450-42	BEARING RETAINER, UPPER	1
MI-12450-11	HEX NUT 5/16"-18	4	MI-12450-43	FILTER PADDLE HANDLE	1
MI-12450-12	CASTER 2-1/2", LOCKING SWIVEL	4	MI-12450-44	CAP SCREW M6-1 X 16mm	1
MI-12450-13	BUTTON HD CAP SCR 5/16"-18 X 1/2	16	MI-12450-45	SUPPORT LEG(LEFT)	1
MI-12450-14	INLET ADAPTER 8" X 4" X 3	1	MI-12450-46	INTAKE BARREL COVER	1
MI-12450-15	INLET ADAPTER CAP 4"	1	MI-12450-47	SUPPORTING BOARD	1
MI-12450-16	IMPELLER 16"	1	MI-12450-48	MOTOR COVER PLATE	1
MI-12450-17	IMPELLER WASHER 6 X 38 X 4MM	1	MI-12450-49	BUTTON HD CAP SCR 1/4"-20 X 1/2	14
MI-12450-18	CAP SCREW M6-1 X 30 RH	1	MI-12450-50	CAP SCREW 3/8" X 1"	4
MI-12450-19	FLANGE BOLT 5/16-18 X 1/2"	42	MI-12450-51	WASHER 3/8"	4
MI-12450-20	FLANGE BOLT 5/16-18 X 3/4"	14	MI-12450-52	HEX NUT 3/8"- 16	4
MI-12450-21	FLEX HOSE 12"	1	MI-12450-53	PHLP HD SCR M5-0.8 X 10mm	3
MI-12450-22	HOSE CLAMP 12"	2	MI-12450-54	COLLECTION DRUM BAG	1
MI-12450-23	COLLECTION DRUM GASKET	1	MI-12450-55	MOTOR 3HP 220V 1-PH	1
MI-12450-24	COLLECTION DRUM HANDLE	1	MI-12450-56	PHLP HD SCR 3/16" - 24 X 3/4"	2
MI-12450-25	PHLP HD SCR 1/4"-20 X 5/8"	2	MI-12450-57	HEX NUT 3/16"- 24	2
MI-12450-26	ACORN NUT 1/4-20	2	MI-12450-58	WASHER 5/16"	16
MI-12450-27	FOAM GASKET 120 X 140MM	1	MI-12450-59	LOCK HANDLE GUIDE ASSY	2
MI-12450-28	DRUM WINDOW 120 X 140MM ACRYLIC	1	MI-12450-60	POWER CORD 12G 3W 72" 6-20P	1
MI-12450-29	RIVET 2 X 4MM ALUMINUM	8	MI-12450-61	MOTOR CORD 12G 3W	1
MI-12450-30	DRUM LOCK HANDLE	1	MI-12450-62	HEX BOLMT6 X 16 mm	1
MI-12450-31	PHLP HD SCR 3/16" - 24 X 3/8"	1	MI-12450-63	REMOTE CONTROL	1
MI-12450-32	MAG SWITCH WITH TIMER AND REMOTE RECEIVER	1	MI-12450-64	BAG CLAMP 15"	1
			MI-12450-65	COLLECTION DRUM BAG 30" X 41"	1

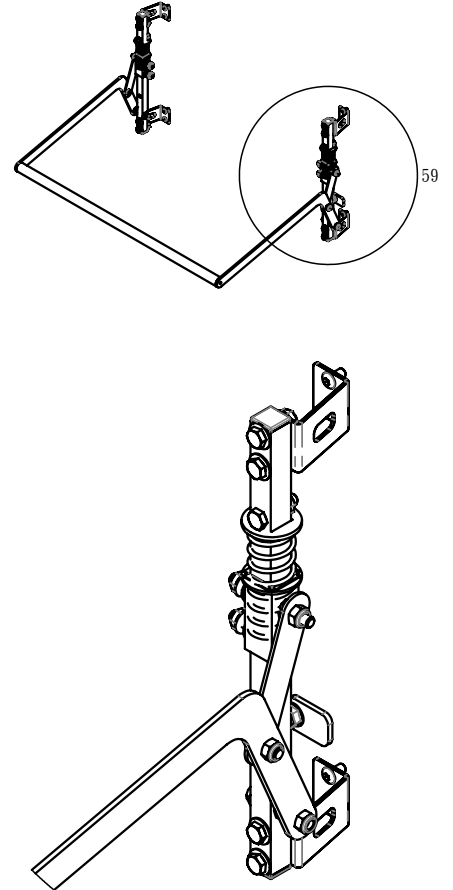
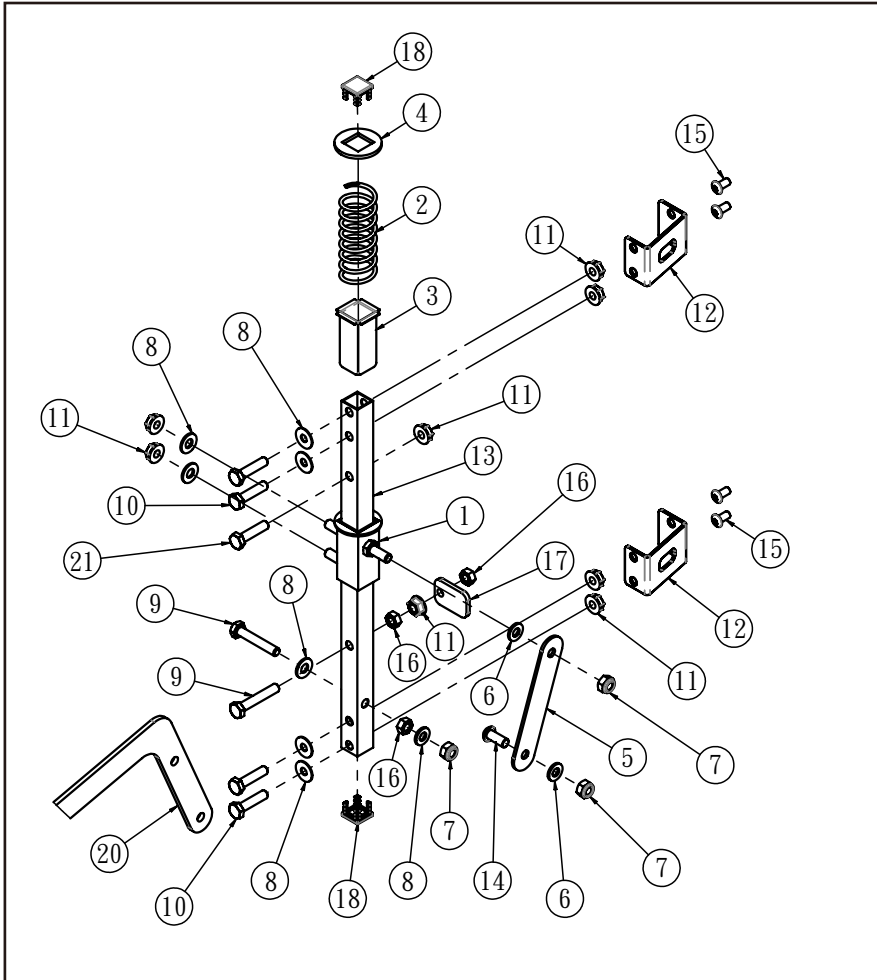
IMPORTANT NOTE: ON SINGLE PHASE UNITS DUE TO LARGE DIAMETER ANTI SPARK IMPELLOR THE START UP TIME ON THIS MOTOR WILL BE DELAYED AND MAY REQUIRE UP TO A 50-60 AMP BREAKER.

ELECTRICAL CONNECTION: ON SINGLE PHASE UNITS VOLTAGE MUST BE MINIMUM 220 VOLT ,208 VOLT WILL NOT PROVIDE ENOUGH TO BRING THE IMPELLOR TO RUNNING SPEED AND UNIT WILL REQUIRE A STEP UP TRANSFORMER TO BRING VOLTAGE TO 220-240 VOLTS

ESPECIALLY IF THE GAUGE OF WIRE FROM THE PANEL IS MORE THAT 50 FT
10 GAUGE EVEN 8 GAUGE IS RECOMMENDED

PARTS LIST FOR MI-12450

MI-12450-59



PARTS LIST FOR MI-12450-59

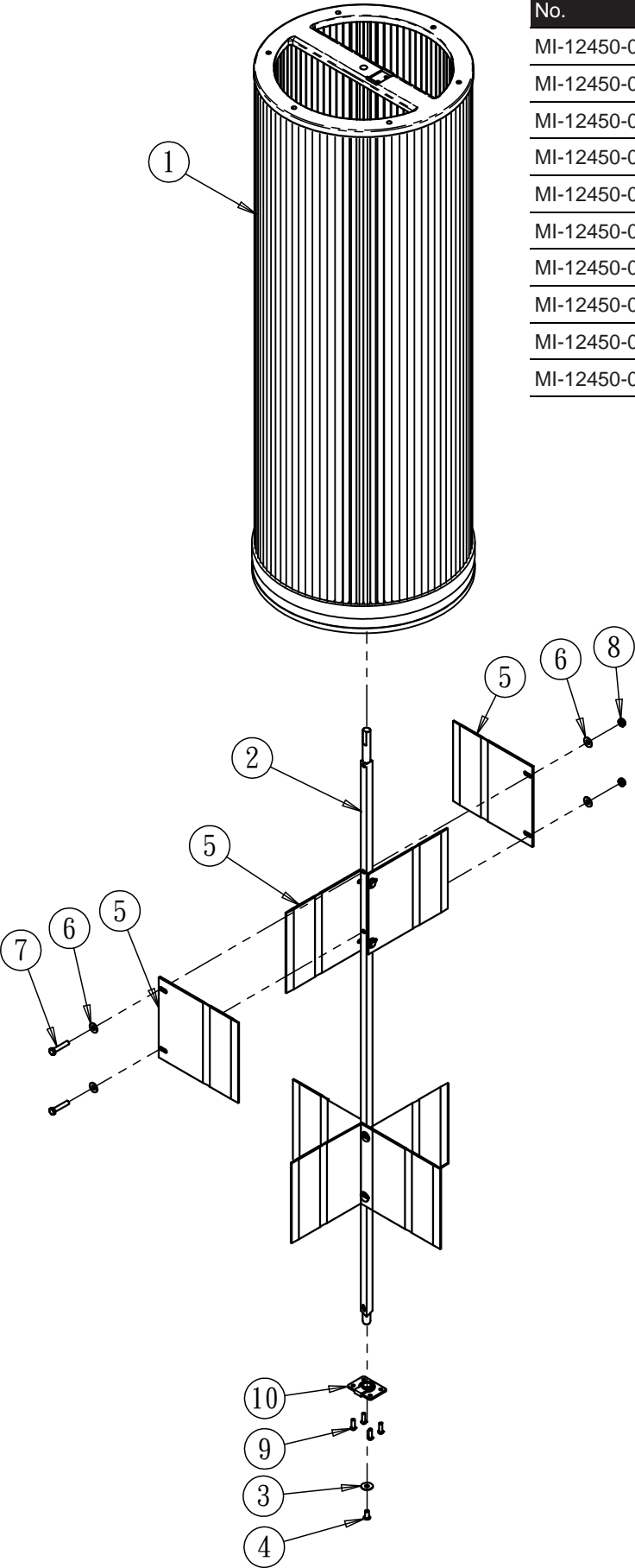
No.	Description	Qty
MI-12450-59-01	SLIDING BRACKET	2
MI-12450-59-02	COMPRESSION SPRING 3 X 33 X 70	2
MI-12450-59-03	COPPER PLATE	8
MI-12450-59-04	SPRING RETAINER	2
MI-12450-59-05	LOCK HANDLE LINK	2
MI-12450-59-06	FLAT WASHER 3/8 PLASTIC	6
MI-12450-59-07	LOCK NUT 5/16-18	6
MI-12450-59-08	WASHER 5/16"	14
MI-12450-59-09	HEX BOLT 5/16-18 X 1-3/4	3
MI-12450-59-10	HEX BOLT 5/16-18 X 1-1/2	8
MI-12450-59-11	FLANGE NUT 5/16-18	13
MI-12450-59-12	LOCK HANDLE GUIDE FIXING PIECE	4
MI-12450-59-13	LOCK HANDLE GUIDE	2
MI-12450-59-14	BUTTON HD CAP SCR 5/16-18 X 3/4	2
MI-12450-59-15	BUTTON HD CAP SCR 1/4-20 X 1/2	8
MI-12450-59-16	HEX NUT 5/16-18	4
MI-12450-59-17	LOCK HANDLE STOP	1
MI-12450-59-18	END CAP	4
MI-12450-59-20	DRUM LID LIFT HANDLE	1
MI-12450-59-21	HEX BOLT 5/16" X 2"	2

PARTS LIST FOR MI-12450

MI-12450-08

PARTS LIST FOR MI-12450-08

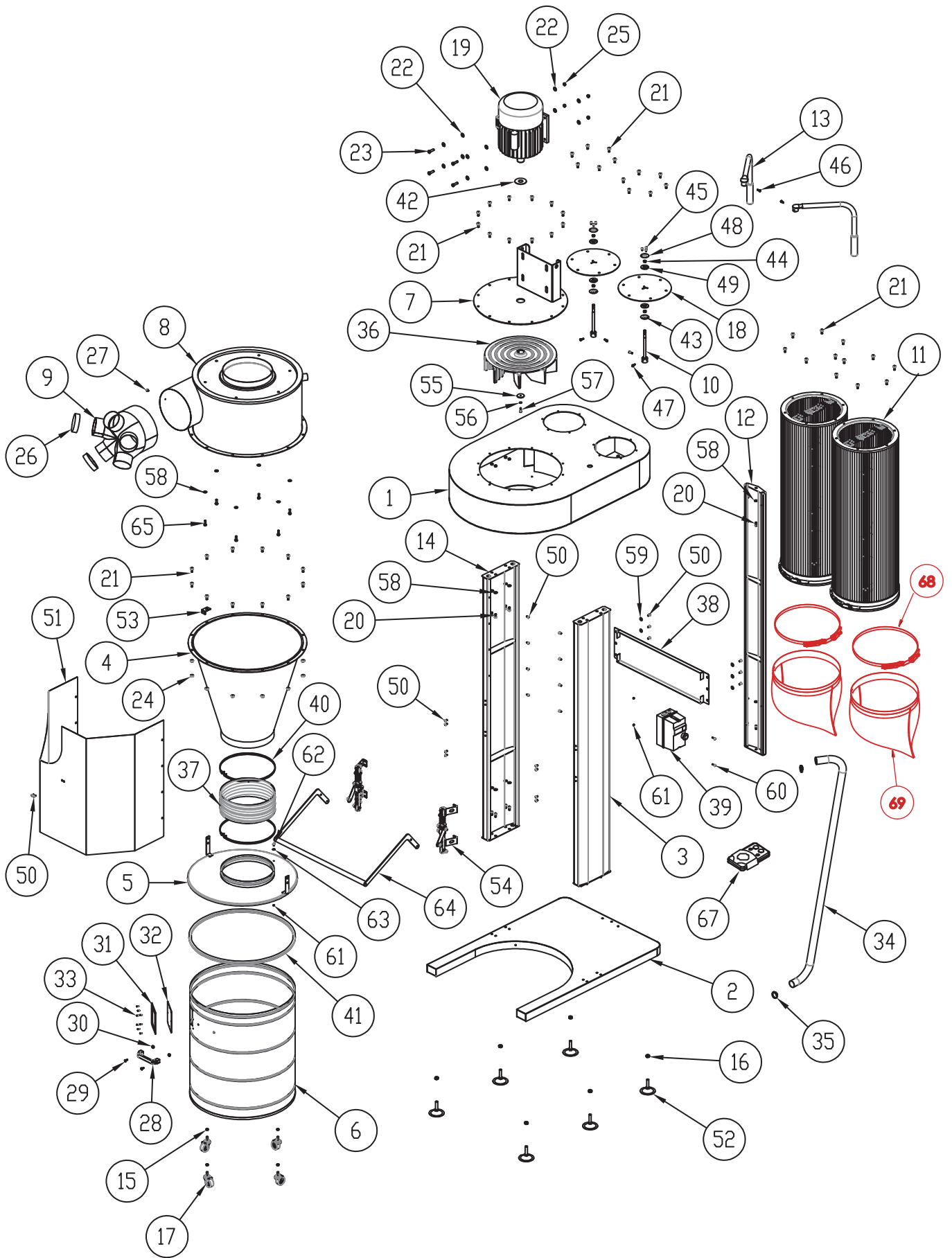
No.	Description	Qty
MI-12450-08-01	CANISTER FILTER	1
MI-12450-08-02	FILTER PADDLE SPINDLE	1
MI-12450-08-03	WASHER 1/4 x 18	1
MI-12450-08-04	PHLP HD SCR M6 X 12	1
MI-12450-08-05	FILTER PADDLE	8
MI-12450-08-06	WASHER 1/4 x 16	16
MI-12450-08-07	HEX BOLT 1/4"-20 X 1-1/4"	8
MI-12450-08-08	LOCK NUT 1/4"(THIN)	8
MI-12450-08-09	PHLP HD SCR M5-0.8 X15	4
MI-12450-08-10	SPINDLE BRACKET CAP	1



PARTS LIST FOR MI-12550 / MI-12553



PARTS LIST FOR MI-12550 / MI-12553



PARTS LIST FOR MI-12550 / MI-12553

No.	Description	Qty	No.	Description	Qty
MI-12550-01	IMPELLER HOUSING	1	MI-12550-36	IMPELLER 16"	1
MI-12550-02	BASE	1	MI-12550-37	FLEX HOSE 12"	1
MI-12550-03	SUPPORT LEG(RIGHT)	1	MI-12550-38	REINFORCEMENT BOARD	1
MI-12550-04	CYCLONE FUNNEL	1	MI-12550-39	MAG SWITCH WITH REMOTE RECEIVER 5HP 220V 1-PH	1
MI-12550-05	COLLECTION DRUM LID	1	MI-12553-39	MAG SWITCH WITH REMOTE RECEIVER 5HP 220V 3-PH	1
MI-12550-06	COLLECTION DRUM	1	MI-12550-40	HOSE CLAMP 12"	2
MI-12550-07	MOTOR COVER PLATE	1	MI-12550-41	COLLECTION DRUM GASKET	1
MI-12550-08	INTAKE BARREL	1	MI-12550-42	RUBBER GASKET	1
MI-12550-09	INLET ADAPTER 10" X 4" X 5	1	MI-12550-43	BEARING RETAINER, LOWER	2
MI-12550-10	PADDLE HANDLE SPINDLE	2	MI-12550-44	SLEEVE BEARING 12 X 14 X 6mm	4
MI-12550-11	CANISTER FILTER ASSY	2	MI-12550-45	PHLP HD SCR M5-0.8 X 15mm	6
MI-12550-12	SUPPORT LEG(REAR)	1	MI-12550-46	HEX CAP SCREW M6-1 X 16mm	2
MI-12550-13	FILTER PADDLE HANDLE	2	MI-12550-47	CAP SCREW M6-1 X 16mm	4
MI-12550-14	SUPPORT LEG(LEFT)	1	MI-12550-48	BEARING RETAINER, UPPER	2
MI-12550-15	HEX NUT 5/16"-18	4	MI-12550-49	RUBBER GASKET	4
MI-12550-16	HEX NUT 1/2"-12	6	MI-12550-50	BUTTON HD CAP SCR 1/4"-20 x 1/2"	24
MI-12550-17	CASTER 2"	4	MI-12550-51	INTAKE BARREL COVER	1
MI-12550-18	FILTER COVER PLATE	2	MI-12550-52	LEVELING FOOT 1/2"-13 X 2"	6
MI-12550-19	MOTOR 5HP 220V 1-PH	1	MI-12550-53	INTAKE BARREL COVER FIXED PIECE	1
MI-12553-19	MOTOR 5HP 220V 3-PH	1	MI-12550-54	LOCK HANDLE GUIDE ASSY	1
MI-12550-20	BUTTON HD CAP SCR 5/16"-18 x 3/4"	22	MI-12550-55	IMPELLER WASHER	1
MI-12550-21	HEX BOLT 5/16"-18 X 3/4"	48	MI-12550-56	SPRING WASHER 1/4"	1
MI-12550-22	FENDER WASHER 3/8"	12	MI-12550-57	CAP SCREW M6-1 X 30	1
MI-12550-23	HEX BOLT 3/8"-16 X 1-1/4"	4	MI-12550-58	FENDER WASHER 5/16"	28
MI-12550-24	HEX NUT 5/16"-18	12	MI-12550-59	FENDER WASHER 1/4"x13mm	6
MI-12550-25	HEX NUT 3/8"-16	4	MI-12550-60	PHLP HD SCR 3/16"- 24 X 3/4"	2
MI-12550-26	INLET ADAPTER CAP 4"	2	MI-12550-61	HEX NUT 3/16"- 24	3
MI-12550-27	PHLP HD SCR 3/16" - 24 X 3/8"	1	MI-12550-62	EXT TOOTH WASHER #10	1
MI-12550-28	COLLECTION DRUM HANDLE	1	MI-12550-63	PHLP HD SCR 3/16"- 24 X 3/8"	1
MI-12550-29	PHLP HD SCR 1/4"-20 X 5/8"	2	MI-12550-64	DRUM LOCK HANDLE	1
MI-12550-30	ACORN NUT 1/4-20	2	MI-12550-65	HEX BOLT 5/16"-18 X 1-1/4"	6
MI-12550-31	FOAM GASKET 120 X 140MM	1	MI-12550-66	MOTOR CORD 10G 3W	1
MI-12550-32	DRUM WINDOW 120 X 140MM ACRYLIC	1	MI-12553-66	MOTOR CORD	1
MI-12550-33	RIVET 2 X 4MM ALUMINUM	8	MI-12553-67	REMOTE CONTROL	1
MI-12550-34	VACUUM HOSE 1-1/2" X 95"	1	MI-12553-68	BAG CLAMP 15"	2
MI-12550-35	HOSE CLAMP 1-3/4"	2	MI-12553-69	COLLECTION DRUM BAG 23" X 30"	2

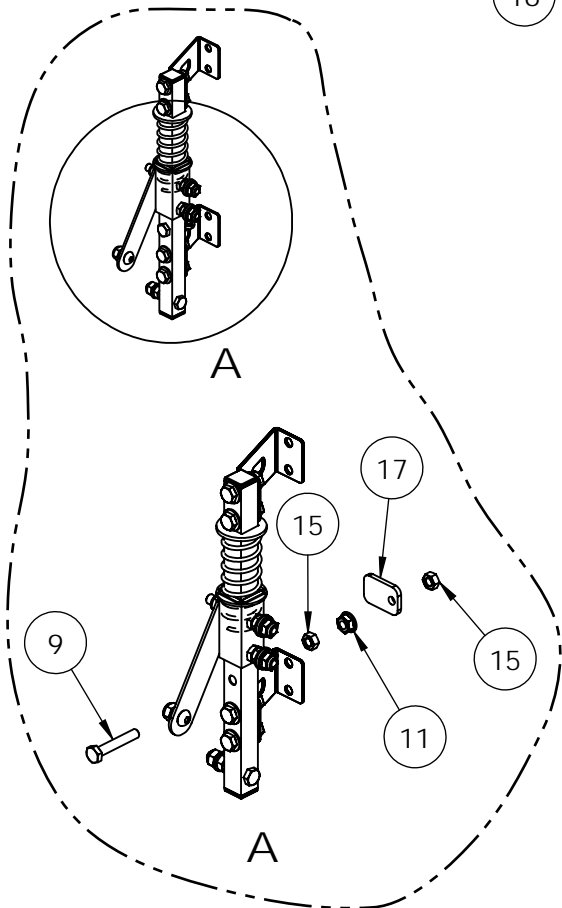
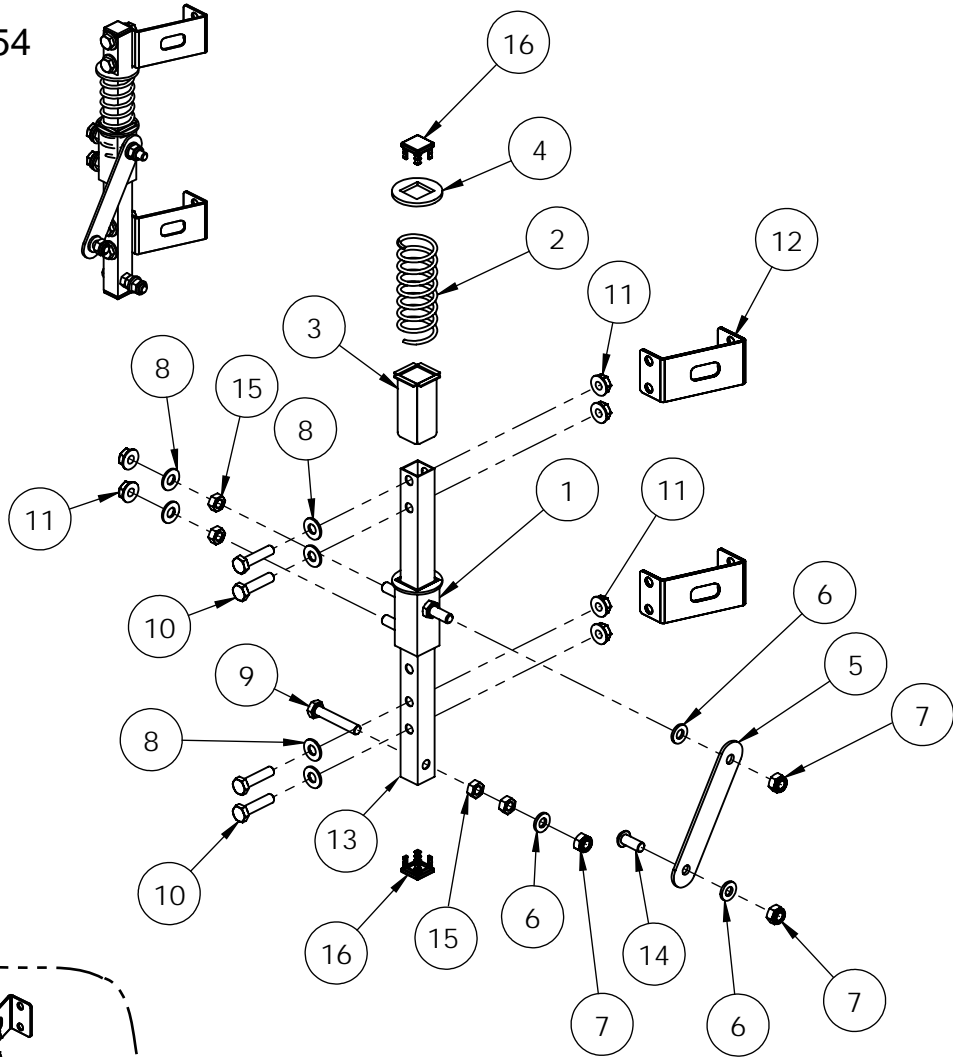
IMPORTANT NOTE: ON SINGLE PHASE UNITS DUE TO LARGE DIAMETER ANTI SPARK IMPELLOR THE START UP TIME ON THIS MOTOR WILL BE DELAYED AND MAY REQUIRE UP TO A 50-60 AMP BREAKER.

ELECTRICAL CONNECTION: ON SINGLE PHASE UNITS VOLTAGE MUST BE MINIMUM 220 VOLT ,208 VOLT WILL NOT PROVIDE ENOUGH TO BRING THE IMPELLOR TO RUNNING SPEED AND UNIT WILL REQUIRE A STEP UP TRANSFORMER TO BRING VOLTAGE TO 220-240 VOLTS

ESPECIALLY IF THE GAUGE OF WIRE FROM THE PANEL IS MORE THAT 50 FT
10 GAUGE EVEN 8 GAUGE IS RECOMMENDED

PARTS LIST FOR MI-12550 / MI-12553

MI-12550-54



PARTS LIST FOR MI-12550-54

No.	Description	Qty
MI-12550-54-01	SLIDDING BRACKET	2
MI-12550-54-02	COMPRESSION SPRING 3 X 33 X 70	2
MI-12550-54-03	COPPER PLATE	8
MI-12550-54-04	SPRING RETAINER	2
MI-12550-54-05	LOCK HANDLE LINK	2
MI-12550-54-06	FLAT WASHER 3/8 PLASTIC	6
MI-12550-54-07	LOCK NUT 5/16-18	6
MI-12550-54-08	WASHER 5/16"	12
MI-12550-54-09	HEX BOLT 5/16-18 X 1-3/4	3
MI-12550-54-10	HEX BOLT 5/16-18 X 1-1/2	8
MI-12550-54-11	FLANGE NUT 5/16-18	13
MI-12550-54-12	LOCK HANDLE GUIDE FIXING PIECE	4
MI-12550-54-13	LOCK HANDLE GUIDE	2
MI-12550-54-14	BUTTON HD CAP SCR 5/16-18 X 3/4	2
MI-12550-54-15	HEX NUT 5/16-18	10
MI-12550-54-16	END CAP	4
MI-12550-54-17	LOCK HANDLE STOP	1

PARTS LIST FOR MI-12550 / MI-12553

MI-12550-11

PARTS LIST FOR MI-12550-11

No.	Description	Qty
MI-12550-11-01	CANISTER FILTER	2
MI-12550-11-02	FILTER PADDLE SPINDLE	2
MI-12550-11-03	WASHER 1/4 x 18	2
MI-12550-11-04	PHLP HD SCR M6 X 12	2
MI-12550-11-05	FILTER PADDLE	16
MI-12550-11-06	WASHER 1/4 x 16	32
MI-12550-11-07	HEX BOLT 1/4"-20 X 1-1/4"	16
MI-12550-11-08	LOCK NUT 1/4"(THIN)	16
MI-12550-11-09	PHLP HD SCR M5-0.8 X15	8
MI-12550-11-10	SPINDLE BRACKET CAP	2

