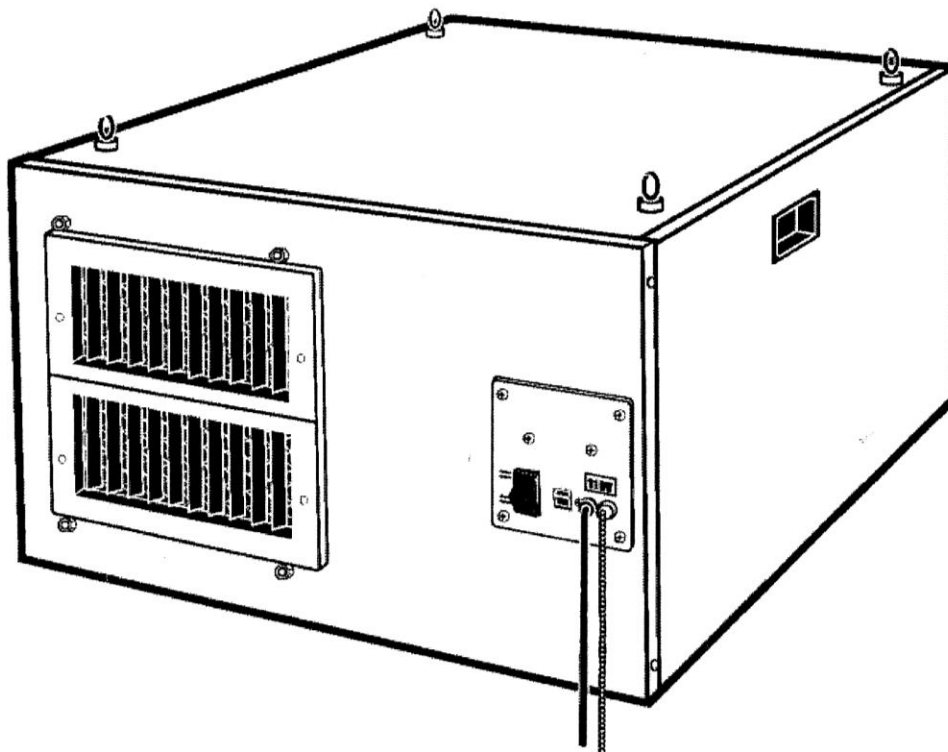


MAGNUM

I N D U S T R I A L

MODEL NO.: MI-11700



OPERATING MANUAL

IMPORTANT SAFETY RULES

Wood working can be dangerous if safe and proper operating procedures are not followed. As with all machinery, there are certain hazards involved with the operation of the product. Using the machine with respect and caution will considerably lessen the possibility of personal injury. However, if normal safety precautions are overlooked or ignored, personal injury to the operator may result. Safety equipment such as guards, push sticks, hold-downs, featherboards, goggles, dust masks and hearing protection can reduce your potential for injury. But even the best guard won't make up for poor judgment, carelessness or inattention, Always use common sense and exercise caution in the workshop. If a procedure feels dangerous, don't try it. Figure out an alternative procedure that feels safer. REMEMBER: Your personal safety is your responsibility.

WARNING: FAILURE TO FOLLOW THESE RULES MAY RESULT IN SERIOUS PERSONAL INJURY

1. **FOR YOUR OWN SAFETY, READ INTRUCTION MANUAL BEFORE OPERATING THE TOOL.** Learn the tool's application and limitation s as well as the specific hazards peculiar to it.
2. **KEEP GUARDS IN PLACE** and in working order.
3. **ALWAYS WEAR EYE PROTECTION.**
4. **GROUND ALL TOOLS.** If tool is equipped with three-prong plug, it should be plugged into a three-hole electrical receptacle. If an adapter is used to accommodate a two-prong receptacle, the adapter plug must be attached a known ground. Never remove the third prong.
5. **REMOVE ADJUSTING KEYS AND WRENCHES.** Form habit of checking to see that keys and adjusting wrenches are removed from tool before turning it "ON".
6. **KEEP WORK AREA AND CLEAN.** Cluttered areas and benches invite accidents.
7. **DON'T USE IN DANGEROUS ENVIRONMENT.** Don't use power tools in damp or wet location, or expose them to rain. Keep work area well light.
8. **KEEP CHILDREN AND VISITORS AWAY.** All children and visitors should be kept a safe distance from work area.
9. **MAKE WORKSHOP CHILDPROOF** - with padlocks, master switches, or by removing starter keys.
10. **DON'T FORCE TOOL.** It will do the job better and be safer at the rate for which it was designed.
11. **USE RIGHT TOOL.** Don't force tool or attachment to do a job for which it was not designed.
12. **WEAR PROPER APPAREAL.** No loose clothing, gloves, neck-ties, rings, bracelets, or other jewelry to get caught in moving parts. Non-slip footwear is recommended. Wear protective hair covering to contain long hair.
13. **ALWAYS USE SAFETY CLASSES.** Wear safety glasses. Everyday eyeglasses only have impact resistant lenses ; they are not safety glasses. Also use face or dust mask if cutting operation is dusty.
14. **SECURE WORK.** Use clamps or a vise to hold work when practical. It's safer than using your hand and frees both hands to operate tool.
15. **DON'T OVERREACH.** Keep proper footing and balance at all times.
16. **MAINTAIN TOOLS IN TOP CONDITION.** Keep tools sharp and clean for best and safest performance. Follow instructions for lubricating and changing accessories.
17. **DISCONNECT TOOLS** before servicing and when changing accessories such as blades, bits cutters, etc.
18. **USE RECOMMENDED ACCESSORIES.** The use of accessories and attachments not recommended by us may cause hazards or risk of injury to persons.
19. **REDUCE THE RISK OF UNINTENTIONAL STARTING.** Make sure switch is in "OFF" position before plugging in power cord.
20. **NEVER STAND ON TOOL.** Serious injury could occur if the tool is tipped or if the cutting tool is accidentally contacted.
21. **CHECK DAMAGED PARTS.** Before further use of tool, a guard or other part that is damaged should be carefully checked to ensure that it will operate properly and perform its intended function – check for alignment of moving parts, binging of moving parts, breakage of parts, mounting, and any other conditions that may affect its operation. A guard or other part that is damaged should be properly repaired or replaced.
22. **DIRECTION OF FEED.** Feed work into a blade or cutter against the direction of the blade or cutter only.
23. **NEVER LEAVE TOOL RUNNING UNATTENDED** TURN POWER OFF. Don't leave tool until it comes to a complete stop.
24. **DRUGS, ALCHHOL, MEDICATION.** Do not operate tool while under the influence of drugs, alcohol or any medication.
25. **MAKE SURE TOOL IS DISCONNECTED FROM POWER SUPPLY** while motor is being mounted, connected or reconnected.
26. **WARNING:** The dust generated by certain woods and wood products can be injurious to your health. Always operate machinery in well-ventilated areas and provide for proper dust removal. Use wood dust collection systems whenever possible.

IMPORTANT SAFETY RULES FOR DUST COLLECTORS

WARNING: Basic precautions should be followed when using your dust collector. To reduce the risk of injury, electrical shock or fire, comply with the safety rules listed below:

1. READ and understand the instruction manual before operating the dust collector.
2. DO NOT leave the dust collector plugged into the electrical outlet. Unplug dust collector from outlet when not in use and before servicing, changing bags, unclogging and cleaning.
3. ALWAYS turn the power switch "OFF" before unplugging the dust collector.
4. WARNING: TO REDUCE THE RISK OF ELECTRICAL SHOCK do not use outdoors or on wet surface. Use for dry pickup only!
5. FOLLOW all electrical and safety codes, including the National Electric Code (NEC) and the Occupational Safety and Health Regulations (OSHA). Qualified personnel should make all electrical connections and wiring only.
6. DO NOT use the dust collector to pick up flammable or combustible liquids such as gasoline. NEVER use the dust collector near any flammable or combustible liquids.
7. USE the dust collector to pick up wood materials only. DO NOT use the dust collector to pick up metal shavings, dust, water, or parts.
8. NEVER use the dust collector to dissipate fumes or smoke. NEVER pick-up anything that is burning or smoking, such as cigarettes, matches or hot ashes.
9. USE only as described in this manual.
10. DO NOT pull the dust collector by the power cord. NEVER allow the power cord to come in contact with sharp edges, hot surfaces, oil or grease.
11. DO NOT unplug the dust collector by pulling on the power cord. ALWAYS grasp the plug, not the cord.
12. DO NOT handle the plug or dust collector with wet hands.
13. REPLACE a damaged cord immediately. DO NOT use a damaged cord or plug. If the dust collector is not operating properly, or has been damaged, left outdoors or has been in contact with water, return it to an Authorized Service Center for service.
14. DO NOT use the dust collector as a toy. DO NOT use near or around children.
15. DO NOT insert fingers or foreign objects into the dust intake ports. Keep hair, loose clothing, fingers, and all body parts away from openings and moving parts of the dust collector.
16. DO NOT use the dust collector without a filter bag and dust collection bag in place and properly secured.
17. DO NOT operate the dust collector with unused dust intake ports uncapped. ALWAYS cover exposed dust intake ports.
18. PERIODICALLY INSPECT dust and filter bags for any cuts, rips or tears. NEVER operate the dust collector with a damaged bag or vacuum hose.
19. The dust collector is designed for home use or light commercial duty ONLY!
20. CONNECT dust collector to a properly grounded outlet only. See Grounding Instructions.

SAVE THESE INSTRUCTIONS

GROUNDING INSTRUCTIONS

The appliance must be grounded, if it should malfunction or breakdown, grounding provides a path of least resistance for electric current to reduce the risk of electric current to reduce the risk of electric shock. This appliance is equipped with a cord having equipment-ground conductor and grounding plug. The plug must be inserted into an appropriate outlet that is properly installed and grounded in accordance with all local codes and ordinances.

WARNING –

Improper connection of the equipment-grounding conductor can result in risk of electric shock. Check with a qualified electrician or service person if you are in doubt as to whether the outlet is properly grounded. Do not modify the plug provided with the appliance – if it will not fit the outlet; have a proper outlet installed by a qualified electrician.

For grounded, cord-connected appliances:

This appliance is for use on a circuit having a normal rating more than 120 volt and is factory-equipped with a specific electric cord and plug to a proper electric circuit. Make sure that the appliance is connected to an outlet having the same configuration as the plug. No adaptor should be used with this appliance. If the appliance must be reconnected for use on a different type of electric circuit, qualified service personnel should make the reconnection.

For a permanently connected appliance:

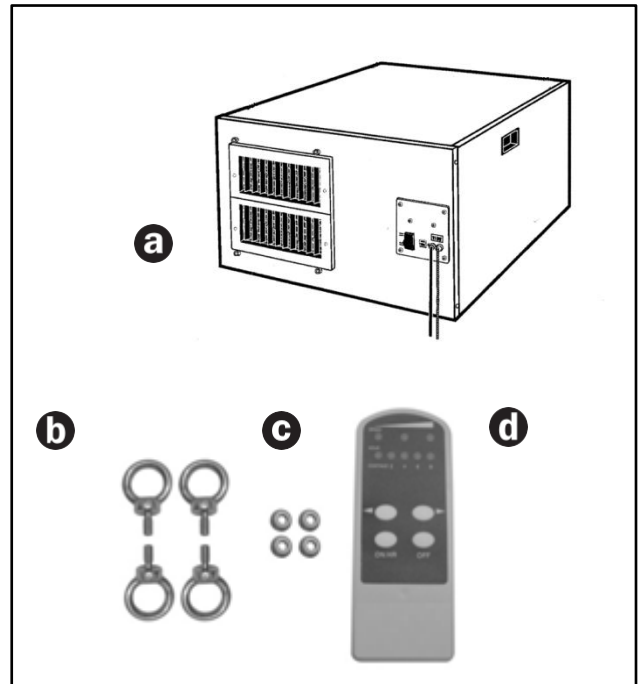
This appliance must be connected to a grounded metal, permanent wiring system; or an equipment - grounding conductor must be run with the circuit conductors and connected to the equipment grounding terminal or lead on the appliance.

UNPACKING

Carefully unpack and remove the unit and its components from the box and check for missing or damaged items as per the list of contents below.

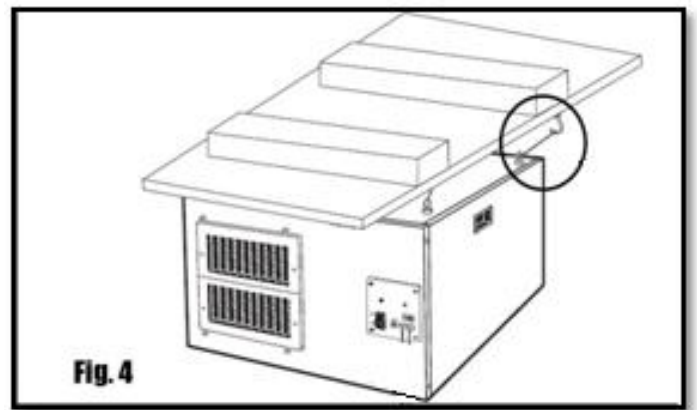
LIST OF CONTENTS

a AIR CLEANER.....	1
b 1/4" EYE-BOLTS.....	4
c FLANGE NUTS.....	4
d REMOTE CONTROL	1



ATTACHING THE EYEBOLTS TO THE AIR CLEANER

1. Thread a flange nut onto each of the eyebolts as shown in Fig. 2.
2. Screw an eyebolt into each of the threaded holes on the top of the cabinet. Fig. 3
3. Tighten the flange nuts down against the top of the cabinet using a 10 mm wrench.
4. Hang overhead or to the ceiling. An example of a typical ceiling mount installation is shown in Fig. 4. Ensure that any mounting hooks or fasteners that are used are properly secured to a structural member such as a beam or joist.



OPERATION

OPERATING THE CONTROL PANEL

The unit can be operated manually (On/Off only) or by remote control but not by both methods at the same time.

1. Using the exchange switch **B**, on the control panel you can enable or disable the remote control.
2. In the manual mode, with the exchange switch set to “No remote control” the unit can be turned ON or OFF by pulling the ON/OFF chain switch **E**.

A: Filter change indicator: when the signal light up in red, this indicates that the filter need to be exchanged.

C: Thermal relay

D: Power cable

NOTE!!

TURN THE MACHINE OFF BEFORE SWITCHING FROM ONE CONTROL MODE TO THE OTHER. SWITCHING FROM MANUAL TO REMOTE WHILE THE UNIT IS IN OPERATION MAY DAMAGE THE CONTROL BOARD INSIDE THE MACHINE.

OPERATING THE REMOTE CONTROL

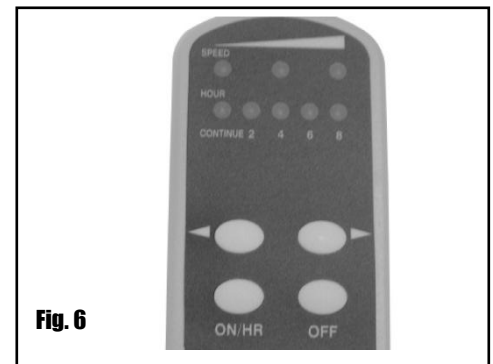
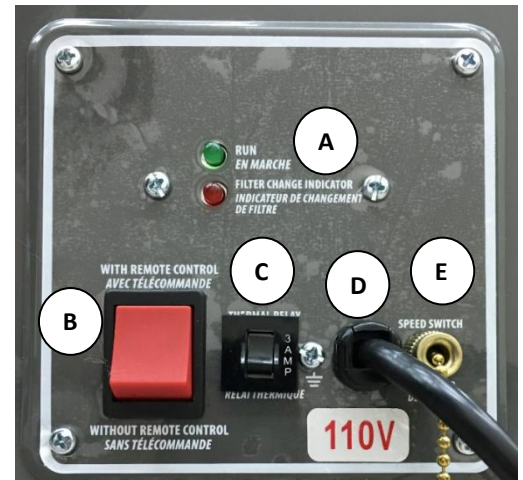
Note: The remote control requires a 9V battery (not supplied).

With the exchange switch on the control panel of the machine set to “Remote Control” you can use the remote control to turn the air cleaner ON by pressing ON/HR or OFF by pressing OFF.

You can also activate or change the timer settings by pressing ON/HR. Pressing the ON/HR button once will turn on the machine on the continuous run setting – the unit will not turn off until the OFF button is pressed. Pressing the ON/HR button multiple times will change the length of the timer setting from continuous to 2, 4, 6, or 8 hours.

The LED light on the remote will indicate which timer setting has been selected. Once the timer has completed, it's preprogrammed cycle the unit will automatically shut down. The speed of the blower can be controlled by pressing the left or right arrow buttons directly above the ON/HR and OFF buttons on the remote. The LED light will indicate which speed setting has been selected.

Ideal speed settings will vary from shop to shop and depending on the operation being performed. Experiment with various speed settings to determine what works best for your shop situation. As a general rule in larger shops or when heavy sanding is being performed use higher speeds. During normal non-sanding operations select the lowest speed that still gives satisfactory results.



Note: For best results, point the remote control towards the control panel on the air cleaner.

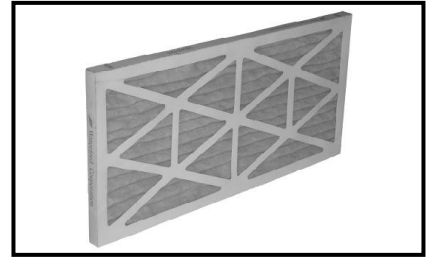
Note: Rather than unplugging after each use, the unit can be turned off by using the on/off chain on the control

CLEANING & CHANGING AIR FILTERS

➤ **OUTER “PLEATED” FILTER**

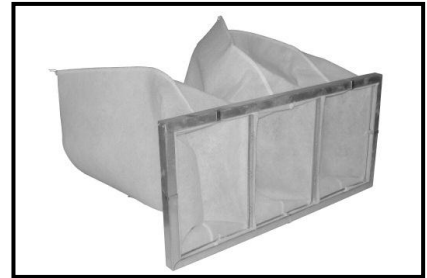
With normal use the outer filter should be inspected and cleaned every 30 days, and replaced with a new one every 4 months.

Note: Don’t wash by water to clean the filter and don’t use an air gun, vacuum which can damage or open up the filter pores.



➤ **INNER “THREE POUCH” FILTER**

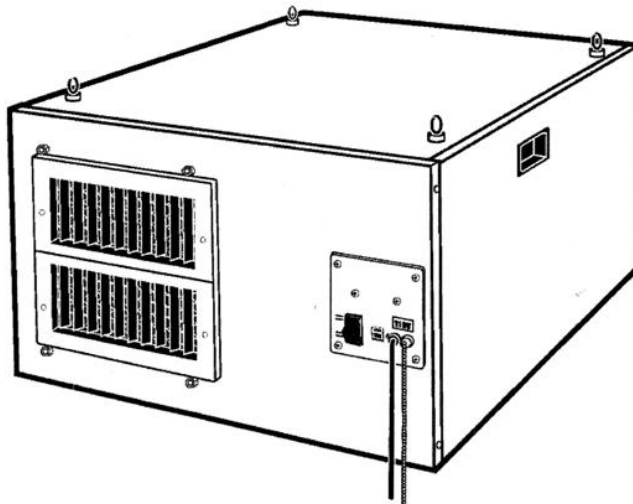
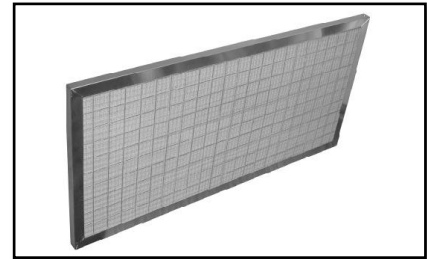
With normal use the inner three-pouch filter should be inspected and cleaned every 30 days, and replaced with a new one every 12 months. For convenience and to limit the number of steps required, inspect and clean the inner pouch filter every time you clean the outer filter.



➤ **OPTIONAL ELECTROSTATIC FILTER**

An optional electrostatic outer filter can be ordered. This Electrostatic Filter replaces the regular Outer “Pleated” Filter and provides the same level of filtration with the added bonus of being washable with water or cleaned using a vacuum and only requires replacement every 18-24 months.

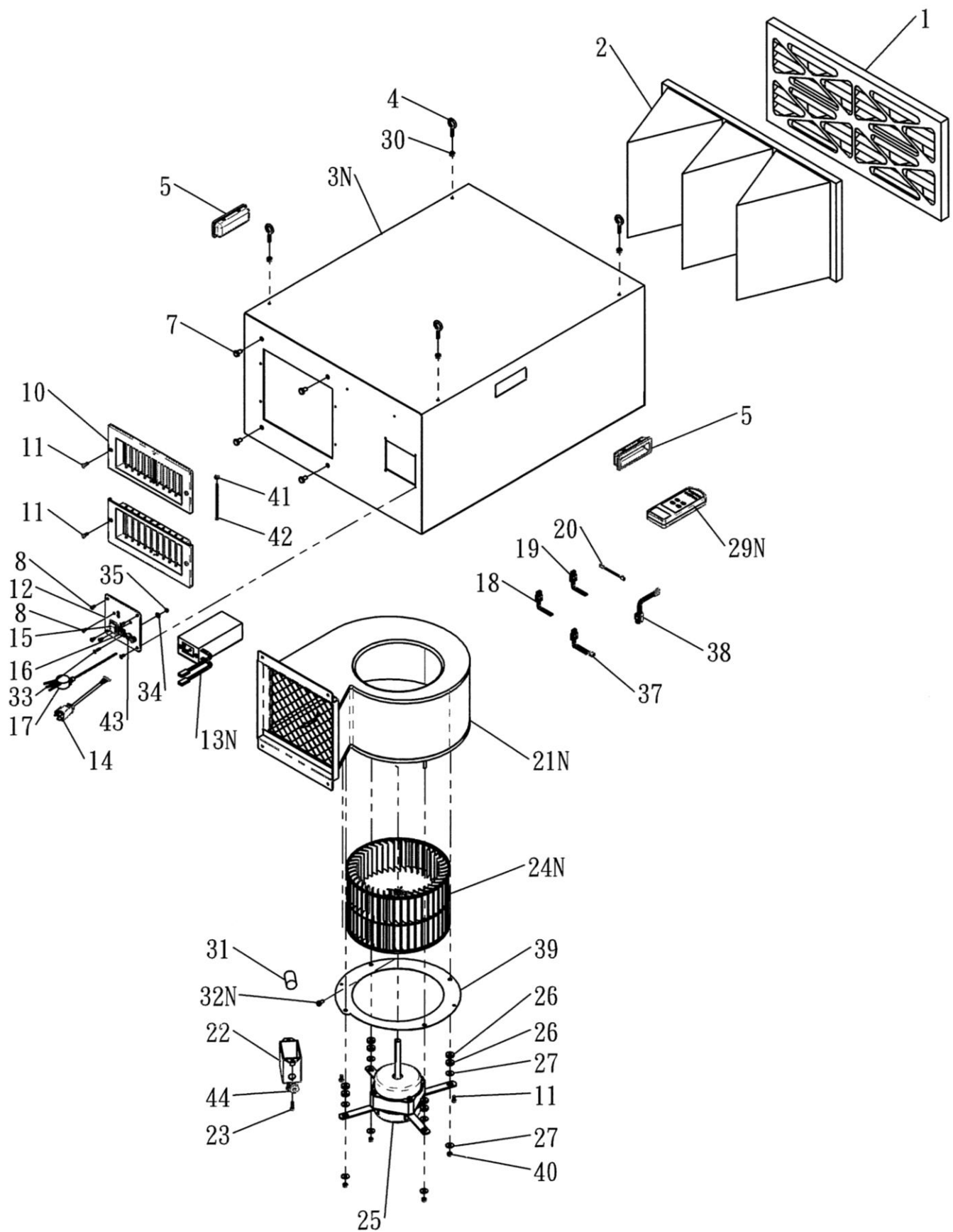
Note: Although the Electrostatic Filter can be washed and vacuumed, it should not be cleaned using an air gun.



NOTE:

AFTER CHANGING THE FILTER YOU CAN RESET THE RED WARNING LIGHT BY PRESSING THE ON AND OFF BUTTONS (ON THE REMOTE CONTROL) TOGETHER FOR APPROX 5 SECONDS UNTIL THE RED LIGHT FADES OUT.

THEN PRESS THE ON BUTTON TO RUN THE MACHINE.



PARTS LIST

MI-11700

PART NO.	DESCRIPTION	SPECIFICATION	Q'TY
MI-11700-01	OUTER PLEATED FILTER		1
MI-11700-02	INNER 3 POUCH FILTER		1
MI-11700-03N	CABINET		1
MI-11700-04	EYE-BOLT	1/4" X 1/2"	4
MI-11700-05	HANDLE		2
MI-11700-07	CAP SCREW	5/16" X 1/2"	4
MI-11700-08	Philip HD SCREW	M4*8	6
MI-11700-10	VENTS		2
MI-11700-11	ROUND HEAD SCREW	3/16" X 1/2"	6
MI-11700-12	SWITCH PLATE		1
MI-11700-13N	REMOTE CONTROL RECEIVER		1
MI-11700-14	POWER CORD		1
MI-11700-15	EXCHANGE SWITCH		1
MI-11700-16	CIRCUIT BREAKER		1
MI-11700-17	CHAIN SWITCH		1
MI-11700-18	CONNECTOR		1
MI-11700-19	CONNECTOR		1
MI-11700-20	CONNECTOR		1
MI-11700-21N	BLOWER HOUSING		1
MI-11700-22	CAPACITOR COVER		1
MI-11700-23	ROUND HEAD SCREW	3/16" X 3/4"	2
MI-11700-24N	FAN	9" X 7"	1
MI-11700-25	MOTOR		1
MI-11700-26	RUBBER MOTOR MOUNT		8
MI-11700-27	WASHER	1/4" X 18	4
MI-11700-29	REMOTE CONTROL		1
MI-11700-30	FLANGE NUT	1/4"	4
MI-11700-31	CAPACITOR		1
MI-11700-32N	CAP SCREW	1/4" X 1/2"	1
MI-11700-33	ROUND HEAD SCREW	M4 X 15	1
MI-11700-34	WASHER	M4	1
MI-11700-35	NUT	M4	1
MI-11700-37	CONNECTOR		1
MI-11700-38	CONNECTOR		1
MI-11700-39	BLOWER HOUSING COVER		1
MI-11700-41	HEX NUT	M4	1
MI-11700-42	HEX HEAD BOLT	1/4" X 1"	1
MI-11700-43	STRAIN RELIEF		1
MI-11700-44	RUBBER GASKET		1
MI-11700-45	LOCK NUT	1/4"	4